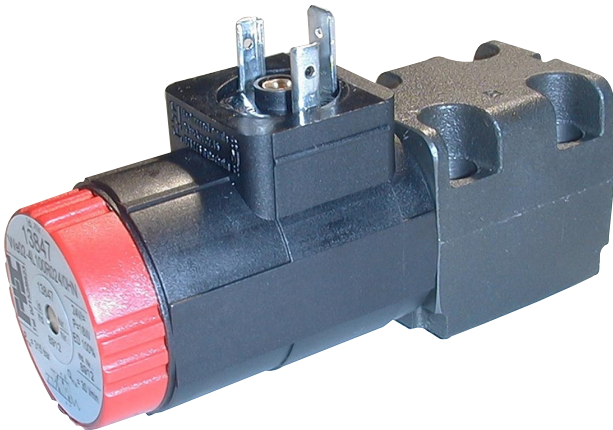


4/2, 4/3 Way Valve NG 4 ISO 4401

electrically operated, directly controlled,
horizontal mounting



- Directly controlled piston valve
- Compact design
- Short switching time
- Low internal leakage
- Pressure sealed oil-immersed solenoids for direct and alternating current
- Easy service: Solenoid can be changed without leakage while the valve is under system pressure; no tools are required
- Solenoids can be rotated 3x90°, allowing alternative connector positions
- Only one connector, even with 4/3 way valves
- Port connection pattern according to ISO 4401

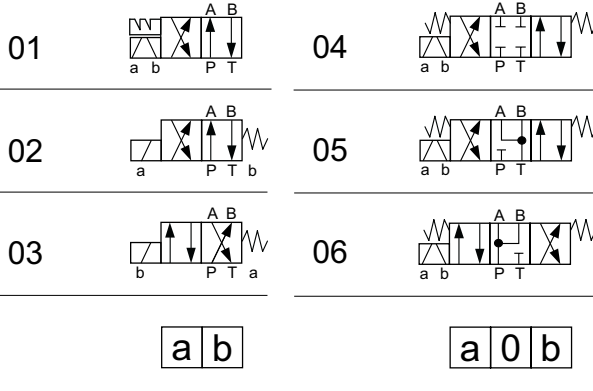
Specifications according to VDI 3267

General

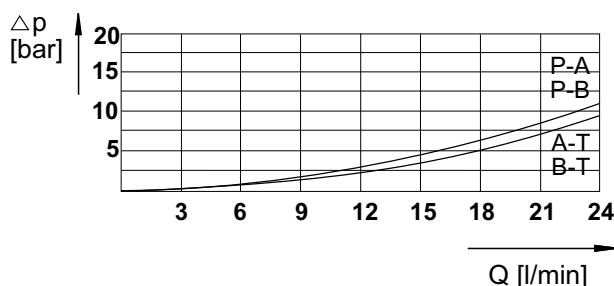
| | |
|------------------------|---------------------------|
| Flow path | see diagramms |
| Type of valve | piston valve |
| Mounting method | 4x M5x25 DIN912 |
| Connection of port | mounting plate |
| Mounting positions | mountable in any position |
| Ambient temperature °C | -5 to +50 |
| Mass valve kg | 0,85 |
| Mass mounting plate kg | 0,8 |

Hydraulic

| | | |
|------------------------------|--------------------|-------------------------|
| Operating pressure range | | |
| Ports P, A, B | bar | 315 |
| Port T | bar | 150 |
| Hydraulic oil temperature °C | | -10 to +70 |
| Viscosity range | mm ² /s | 10 to 300 |
| Maximal rate of flow | l/min | 30 |
| Operation | | electrical |
| | | 24V DC 230V, 50Hz AC |
| Switching time on | ms | 17 25 |
| Switching time off | ms | 17 25 |
| Power consumption P20 | W | 20 |
| Making capacity P20 | VA | |
| | | 64 |
| Duty factor | % | 100 100 |
| Protection system DIN 40050 | | IP64 IP64 |



Characteristic curve
for hydraulic oil 35 mm²/s, 50°C

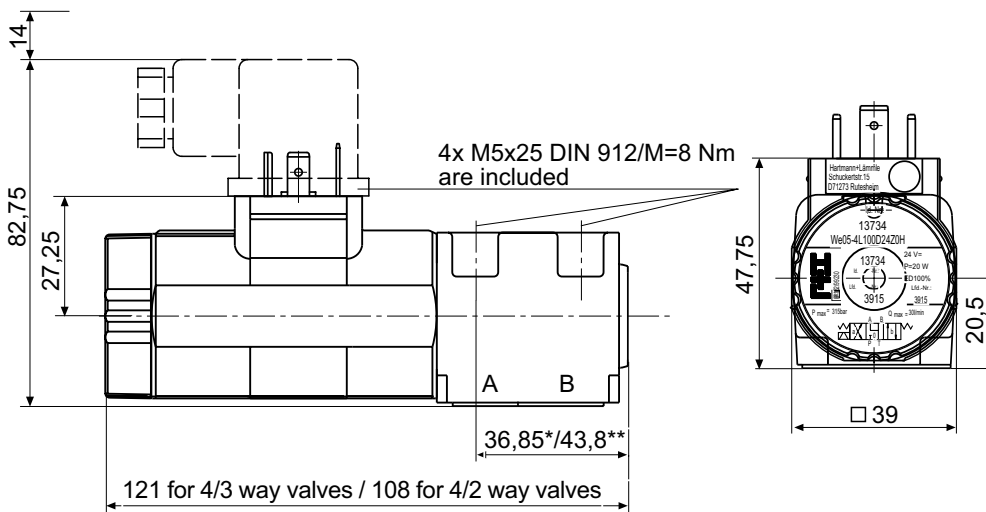


Options:

- Alternative voltages
- Alternative configurations
- Alternative connectors

The specifications given herein are subject to alteration

Way Valve NG 4 ISO 4401 horizontal mounting



Fastening screws
are included
order number:
4 x Id.-Nr. 800-049

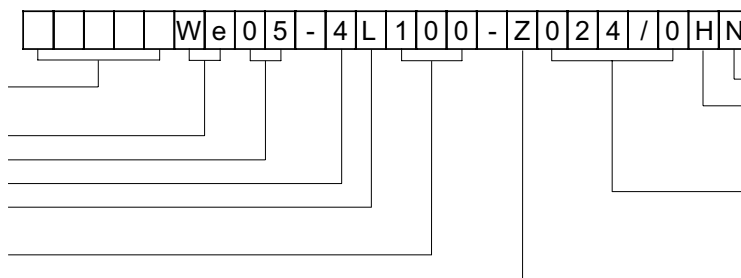
Plug not included,
order number:
Id.-Nr. 806-002 (4/2)
Id.-Nr. 806-003 (4/3)

electrical connector seal
not included,
order number:
Id.-Nr. 80162-004

* without emergency
override
** with emergency
override

Type Code

Id.-Nr. (specified
by the factory)
Directional control valve
Electrically controlled
Configuration number
Nominal size
Mounting
L= horizontal
Design code
Solenoid type
R= single solenoid
Z= double solenoid

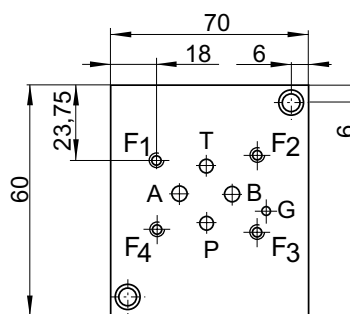
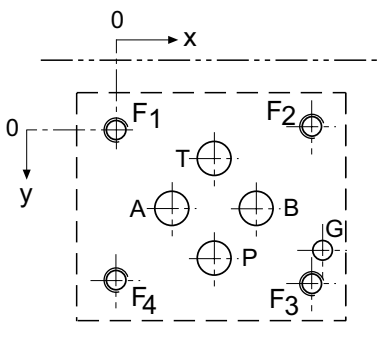


Manual emergency operation
Electric interface
H= connector DIN 43650
M= connector M12
Power supply / Voltage
024/0= 24V DC
220/5= 230V/50Hz

Port connection pattern

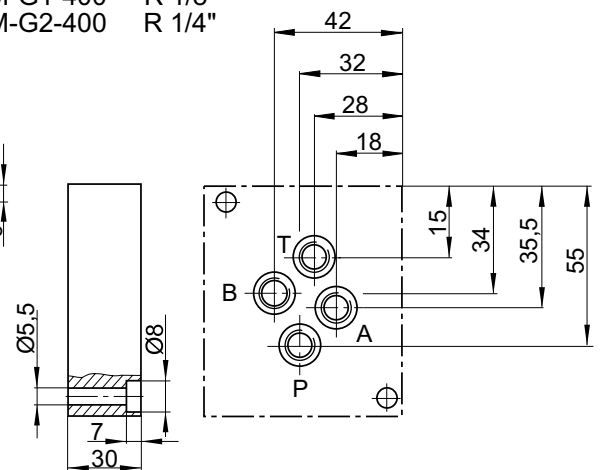
NG 4 ISO 4401

The figure shows the side of the mounting
plate to which the valve is fastened



Single-unit mounting plate

Order number:
PW4M-G1-400 R 1/8"
PW4M-G2-400 R 1/4"



| | P | A | T | B | F1 | F2 | F3 | F4 | G |
|------|-------|-------|------|-------|----|-------|-------|------|-------|
| Ømax | Ø4,5 | Ø4,5 | Ø4,5 | Ø4,5 | M5 | M5 | M5 | M5 | Ø4 |
| x | 12 | 4,3 | 12 | 19,7 | 0 | 24 | 24 | 0 | 26,5 |
| y | 20,25 | 11,25 | 2,25 | 11,25 | 0 | -0,75 | 23,25 | 22,5 | 17,75 |

Multiple-unit mounting plates can be supplied
on request

The specifications given herein are subject to alteration