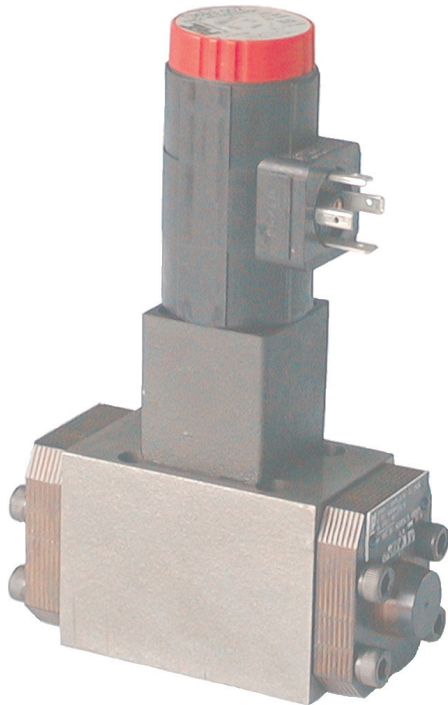


4/2, 4/3 Way Valve NG 6

hydraulically operated, electrically controlled, piloted, pilot NG 4 ISO 4401



- Piloted piston valve
- High switching power
- Short switching time
- With internal or external pilot oil supply
- Easy service: Solenoid can be changed without leakage while the valve is under system pressure; no tools are required
- Solenoids can be rotated 3x90°, allowing alternative connector positions
- Only one connector, even with 4/3 way valves

Specifications according to VDI 3267

General

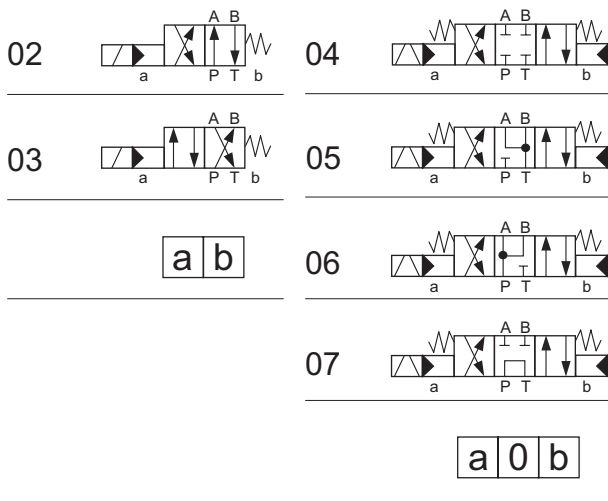
Flow path	see diagrams
Type of valve	piston valve
Mounting method	4x M5x30 DIN912
Connection of port	mounting plate
Mounting positions	mountable in any position
Ambient temperature	°C -5 to +50
Mass valve	kg 1,8
Mass mounting plate	kg 1,0

Hydraulic

Operating pressure range	bar 315
Ports P, A, B	bar 150 / 250*
Port T	bar 150 / 250*
Hydraulic oil temperature	°C -10 to +70
Pilot pressure area	bar 3 to 315
Pilot oil volume	ccm 2x 0,7
Viscosity range	mm ² /s 10 to 300
Maximal rate of flow	l/min 80
Operation	hydraulically operated electrically controlled 24V DC 230V, 50Hz AC
Switching time on	ms 20 30
Switching time off	ms 20 30
Power consumption P20	W 20
Making capacity P20	VA 64
Duty factor	% 100 100
Protection system DIN 40050	IP64 IP64

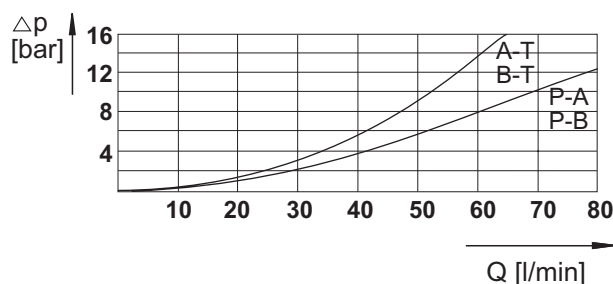
* at external pilot oil drain

Symbol:



Characteristic curve

for hydraulic oil 35 mm²/s, 50°C

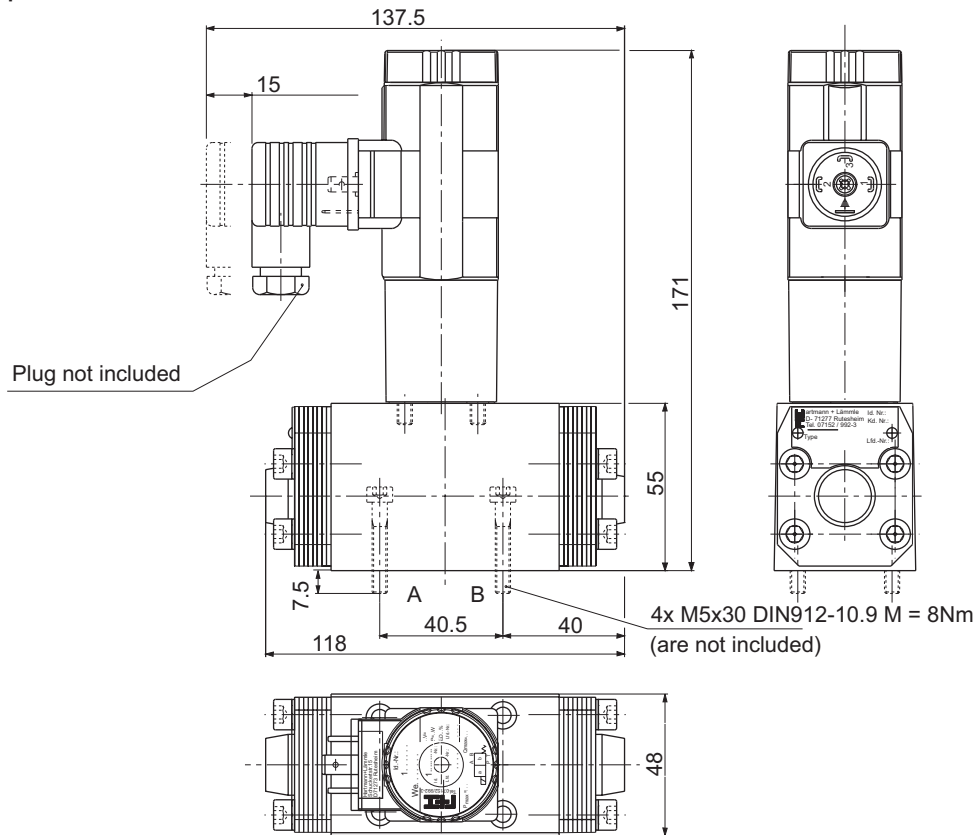


Options:

- Adjustable switching delay
- Stroke limitation (replace one-way restrictor)
- Electric monitoring of the spool position
- Alternative configurations
- Alternative voltages

The specifications given herein are subject to alteration

Way Valve NG 6 piloted



Fastening screws
Order number:
4 x Id.-Nr. 800-050

Plug not included,
Order number:
Id.-Nr. 806-002 (4/2)
Id.-Nr. 806-003 (4/3)

Electric connector seal,
Order number:
Id.-Nr. 80162-004

Type Code:

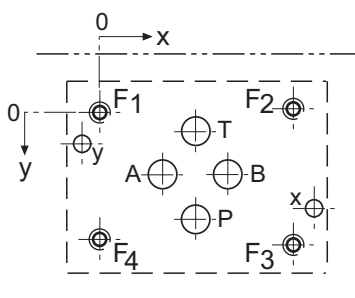
Id.-Nr. (specified by the factory)
Directional control valve
Electrically controlled
Configuration number
Nominal size
Mounting
Design code
Mounting pilot
Nominal Size Pilot
L=horizontal
R=vertical
Pilot oil supply extern
Pilot oil drain extern
Adjustable switching time

W e 0 4 - 6 B 1 0 0 - 4 L X Y T 2 A 1 Z 2 2 0 / 5 H N

Manual emergency operation
N= single acting
D= double acting
Electric interface
H= connector DIN 43650
M= connector M12
Power supply / Voltage
024/0= 24V DC
220/5= 230V/50Hz
Solenoid type
R= single solenoid
Z= double solenoid
Stroke limitation

Port connection pattern NG 6

The figure shows the side of the mounting plate to which the valve is fastened



	P	A	T	B	F1	F2	F3	F4	X	Y
Ø	Ø7	Ø7	Ø7	Ø7	M5	M5	M5	M5	Ø4	Ø4
x	21,5	12,7	21,5	30,2	0	40,5	40,5	0	46,5	-5
y	25,75	15,45	5,15	15,45	0	-0,75	31,75	31	25,25	5,95

F: min. 1,5 x Ø, deep
G: min. 1,5 x Ø, deep

Only by pilot oil supply and drain X and Y

The specifications given herein are subject to alteration