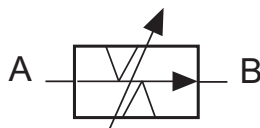


Flow Control Valve NG 6 ISO 4401

Controlled by rotary knob



Symbol:



- Min. rate of flow: 10 cm³/min
- Reproducibility even with low flow rates
- Fluid flow can be controlled nearly independently of pressure and viscosity
- Control range of up to 3 rotations
- Sensitive adjustment

Specifications according to VDI 3267

General

Flow path	see diagrams
Type of valve	gap-type throttle valve
Mounting method	2x M5x50
Connection of ports	mounting plate
Mounting position	mountable in any position
Ambient Temperature °C	-5 to +50
Mass of valve kg	1,0
Mass of mounting platte kg	0,8

Hydraulic

Operation pressure range	250
Ports A, B bar	-10 to +70
Hydraulic oil temperature °C	10 to 300
Viscosity range mm ² /s	9
max. rate of flow l/min	330°
Operation	1050°
Angle of rotation	
3 rotations	

Rate of flow Q _{min} -Q _{max} (cm ³ /min)	Flow range	Rot. 1	Rot. 2	Rot. 3
10- 100	0.1	x		
10- 200	0.2	x		
10- 400	0.4	x		
25- 500	0.5	x		
25- 700	0.7	x		
50- 1500	1.5	x	x	
100- 3000	3.0	x		
150- 6000	6.0	x	x	
20- 8000	8.0		x	x
20- 1200	1.2		x	x
20- 3000	3.0		x	
20- 6000	6.0			x
20- 9000	9.0		x	

Options:

- Lockable
- Front-panel mounting
- Protective cover

The specifications given herein are subject to alteration

