

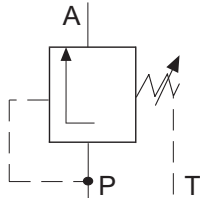
Pressure-Sequence Valve

Cartridge, directly controlled

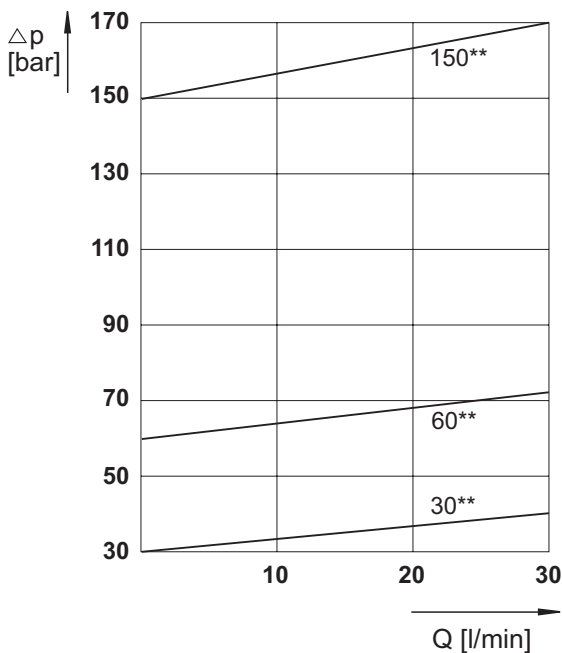
- Damped piston valve
- Small hysteresis
- Several pressure steps
- Different adjustment methods



Symbol:



Characteristic curve
for hydraulic oil 35 mm²/s, 50°C



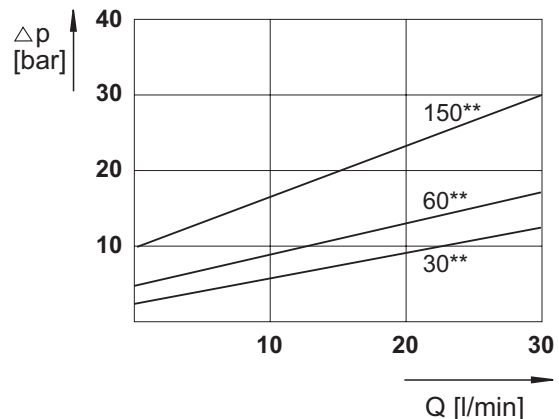
Specifications according to VDI 3267

General

| | | |
|---------------------|----|---------------------------|
| Flow path | | see diagrams |
| Type of valve | | piston valve, damped |
| Mounting method | | M24x1,5 |
| Connection of port | | location hole |
| Mounting positions | | mountable in any position |
| Ambient temperature | °C | -5 to +50 |
| Mass valve | kg | 0,4 |

Hydraulic

| | | |
|---------------------------|--------------------|----------------------------------|
| Operating pressure range | | |
| Ports P, A, B | bar | 3-30, 5-60, 10-150, or 20-250 |
| Hydraulic oil temperature | °C | -5 to +70 |
| Viscosity range | mm ² /s | 10 to 300 |
| max. flow | l/min | 30 |



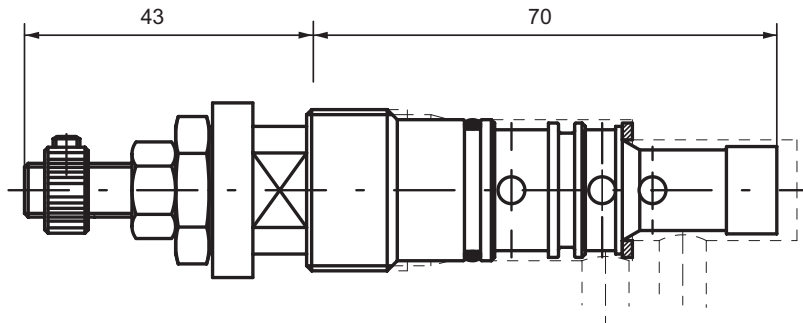
* = Min. adjustable pressure
** = Max. adjustable pressure

The specifications given herein are subject to alteration

Pressure-Sequence Valve

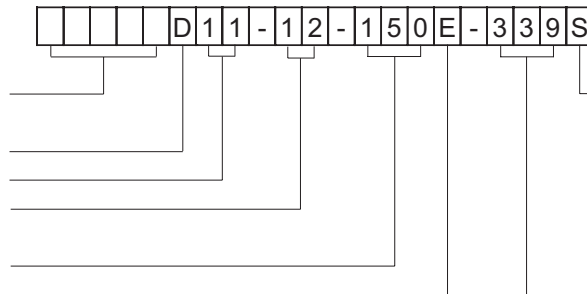
Cartridge, directly controlled

Dimensions:



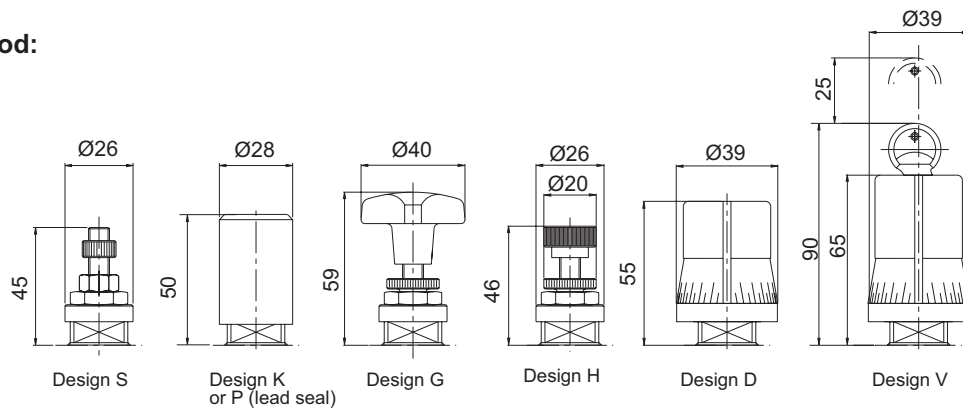
Type Code:

Id.-Nr.(specified by the factory)
Pressure valve
Configuration number
Nominal size
max. adjustable pressure
30, 60, 150 and 250 bar
Mounting

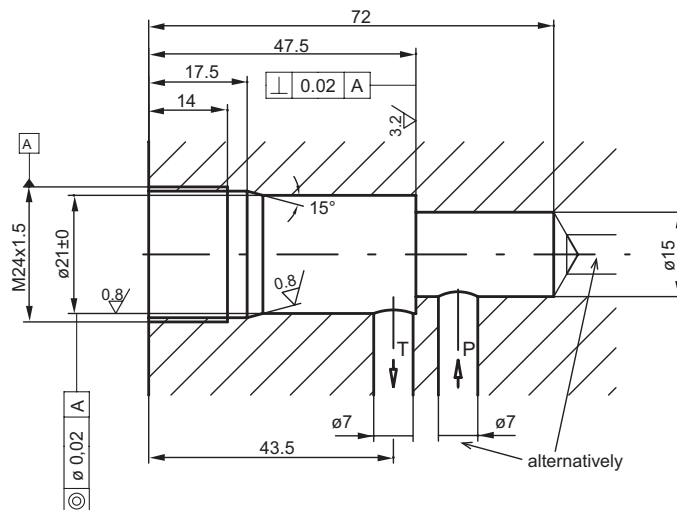


Adjustment method
S= setting screw
G= star knob
K= cover
P= cover with lead seal
D= rotary knob
V= rotary knob and lock
H= handwheel
Design code

Adjustment method:



Location hole:



The specifications given herein are subject to alteration