

## Accumulator Charging Valve Kit / Block Mounting

piloted

Bypass Valve NW12 / NW16

### Design and Function:

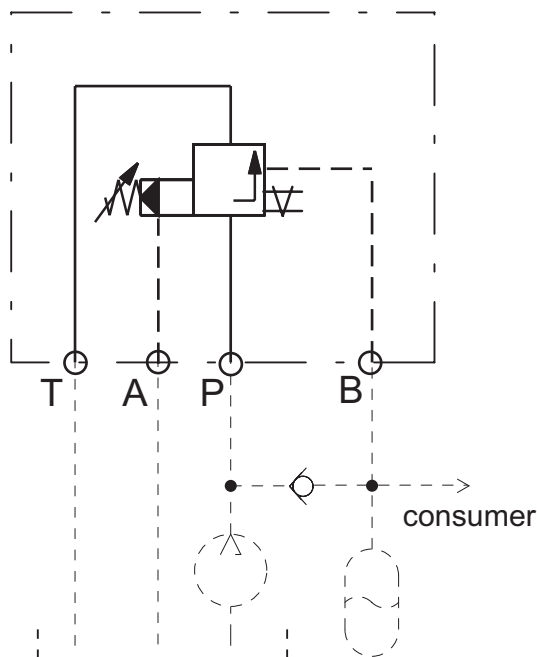
Accumulator charging valves are piloted piston valves. The valve controls the hydraulic accumulator charging process, for systems with fixed displacement pumps.

After the accumulator has been charged and system pressure is reached, the valve then switches the pump flow into bypass mode (P to T). When the pressure falls because functions are demanding flow, the valve will sense the difference and will close the bypass to allow the accumulator to recharge. Pressure differences available include: 5%, 10%, 15% and 20%.

The accumulator charging valve for block mounting can be supplied as kit for the direct mounting on manifolds. Manufacturing dimensions for the hole cavity are included on this data sheet.



### Symbol:



### Advantages:

- Optimised power economy and reduced heat emission from the hydraulic system
- Energy saving due to low bypass pressure
- Fixed switching hysteresis, simple start up procedure
- Soft and exact switching over due to pressure pre-relieve
- Robust und reliable through simple design

### Options:

- Electrical discharge (data sheet 344)
- Complete accumulator charging units (data sheet 711)

The specifications given herein are subject to alteration



