

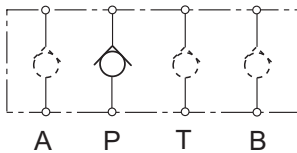
Check Valve NG 4 ISO 4401 Sandwich-plate



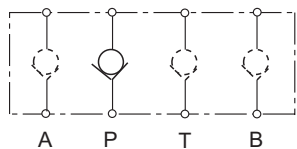
- Hermetically closed seat valve
- Low flow resistance
- Compact design
- Available canal and direction of check

Symbol:

Configuration 1



Configuration 2



Specification according to VDI 3267

General

| | |
|----------------------|----------------------------|
| Configuration number | see symbol |
| Type of valve | seat valve, spring-weight |
| Mounting method | sandwich-plate |
| Mounting position | mountable in any positions |
| Ambient temperature | °C -5 bis +50 |
| Mass valve | kg 0,3 |

Hydraulic

| | |
|---------------------------|-------------------------------|
| Operating pressure max. | bar 315 |
| Hydraulic oil temperature | °C -5 bis +70 |
| Viscosity range | mm ² /s 10 bis 300 |
| max. flow | l/min 30 |
| Open pressure | bar 1 (Option 0,5) |

The specifications given herein are subject to alteration

