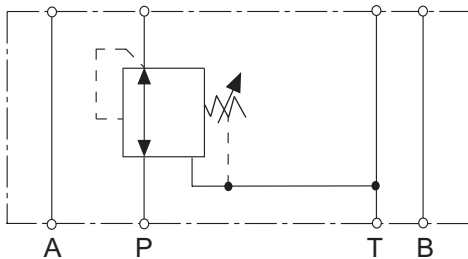


## Pressure-reduction valve NG 4 ISO 4401 sandwich-plate

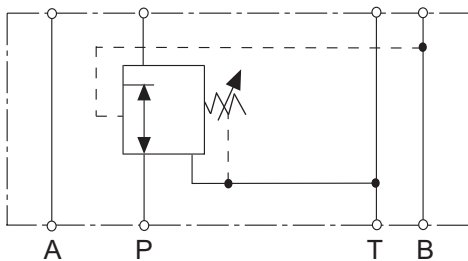


### Symbol:

#### D40 pressure reduction in P

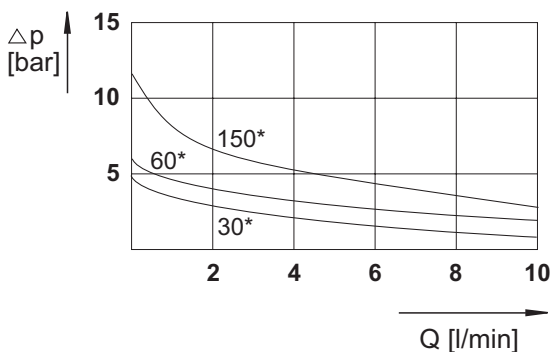


#### D41 pressure reduction in B



### Characteristic curve

for hydraulic oil 35 mm<sup>2</sup>/s, 50°C



\* = Minimum pressure set steps  
\*\* = Minimum pressure set steps

- Pressure reduction in P oder B
- Damped piston valve
- Small hysteresis
- Different adjustment method

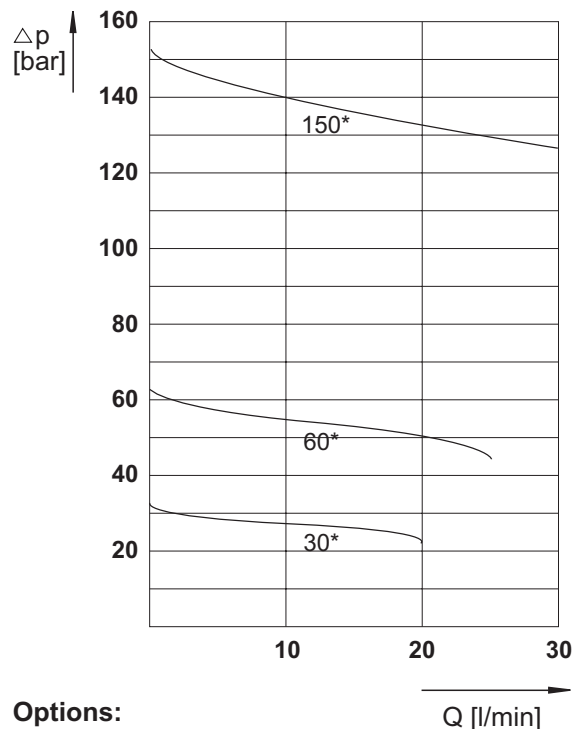
### Specifications according to VDI 3267

#### General

Configuration number	see symbol
Type	direct controlled piston valve
Mounting method	sandwich plate
Mounting method	mountable in any position
Ambient temperature °C	-5 bis +50
Mass valve kg	0,6

#### Hydraulic

Operating pressure max. bar	315
Pressure steps bar	3-30, 5-60, 10-150, 20-250 30-315
Hydraulic oil temperature °C	-5 bis +70
Viscosity mm <sup>2</sup> /s	10 bis 300
Operating flow range l/min	see characteristic curve



### Options:

- Measuring connection 1/8"
- Different adjustment method

The specifications given herein are subject to alteration

