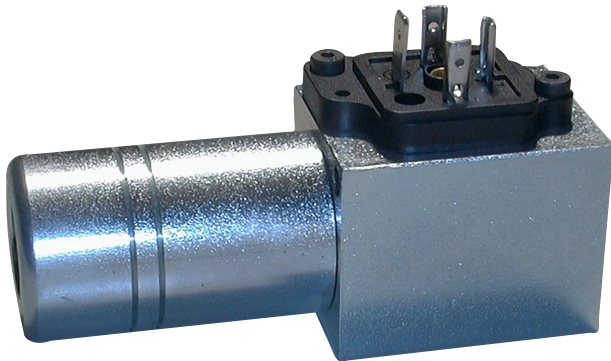


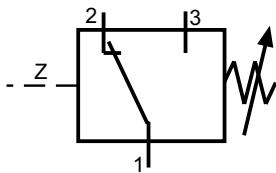
Pressure Switch

Piston Pressure Switch
Hydraulic-Electric



- hydraulic-electric pressure switch
- hydraulic piston damping
- small switching hysteresis
- various mounting positions
- adjustment by cap screw and cover
- 5 pressure ranges

Symbol:



Specifications according to VDI 3267

General

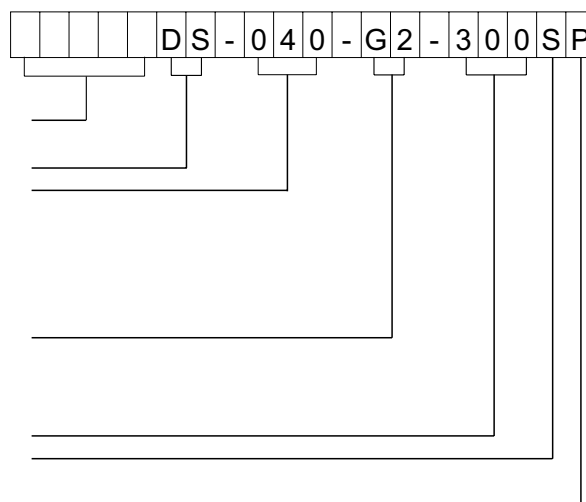
Symbol		see diagram
Type of valve		piston switch
Connection		by flange or plate
Mounting position		mountable in any position
Ambient temperature	°C	-5 to +50
Mass of switch	kg	1,0

Hydraulic

Operation pressure	bar	315
Hydraulic oil temperature	°C	-10 to +70
Viscosity range	mm ² /s	10 to 300
Maximal rate of flow	l/min	30

Type code

Ident.-Nr.
(by the factory)
Pressure switch
Pressure range:
040=40bar
100=100bar
160=160bar
250=250bar
315=315bar
Mounting:
G2=pipe G1/4
P0=manifold vertical
P1=manifold horizontal
Design code
Adjustement
S=cap screw
Seals:
P=Perbunan
V=Viton



The specifications given herein are subject to alteration

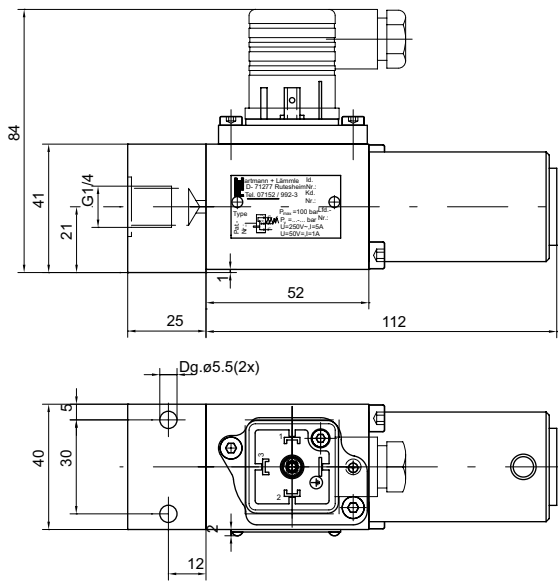
Pressure Switch

Piston Pressure Switch

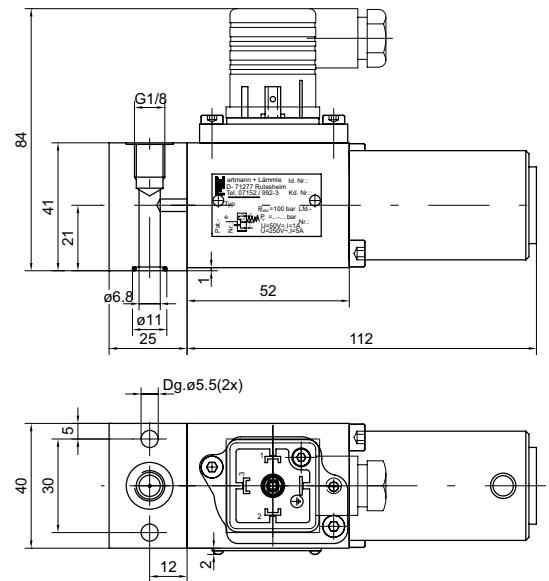
Hydraulic-electric

Dimension:

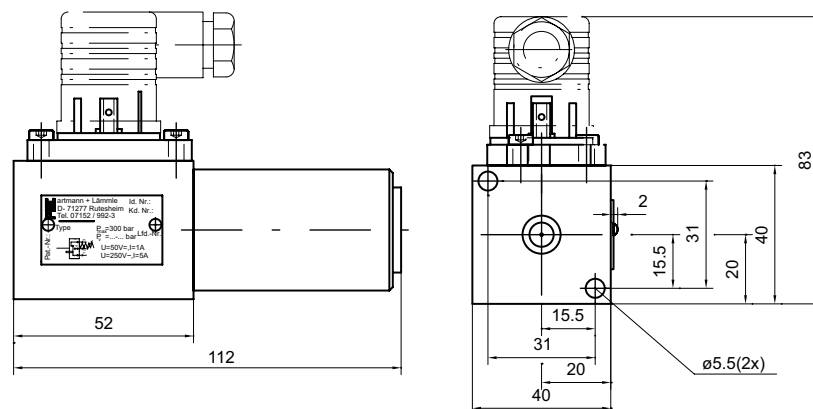
Connection by pipe fitting G1/4:



Manifold mounting horizontal:



Manifold mounting vertical:



The specifications given herein are subject to alteration