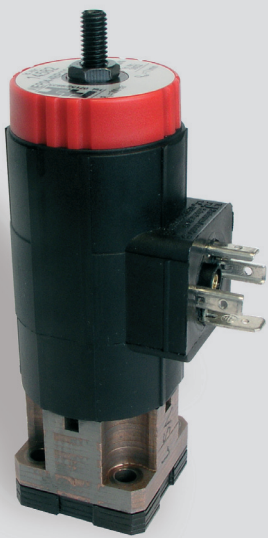


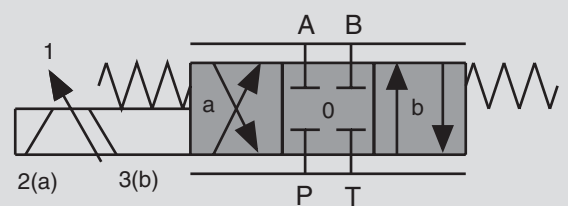
Proportional Directional Control Valve NG4 ISO 4401



Pumps and Hydraulic **Solutions**
from Voith Turbo H+L hydraulic.
Systems **Especially for You**

- Proportional valve for control of direction and flow
- Also usable as very fast switching valve
- High dynamic, short switching time
- High operating responsiveness and low hysteresis
- Low control oil requirement
- Extremely compact design
- Easy service; solenoid can be changed without leakage while the valve is under system pressure, no tools are required
- Only one connector
- Solenoids can be rotated 3x90°, allowing alternative connector positions
- Port connection pattern according to ISO 4401

Symbol



The valve controls continuously the direction and the range of the volume flow. Applications are ultra compact linear drives or controlled fast switching operations. The housing is designed as multilayer component and the magnetic armature is attached directly on the valve piston. The integrated design allows extremely small construction with low hysteresis and high operating responsiveness.

The drive is made by the external amplifier PWM4. The +/-10V signal permits analog drive. With digital inputs it is possible to choose predefined valve positions and ramps (Option). Project dependent it is possible to design PWM4 boards "self-intelligent" .

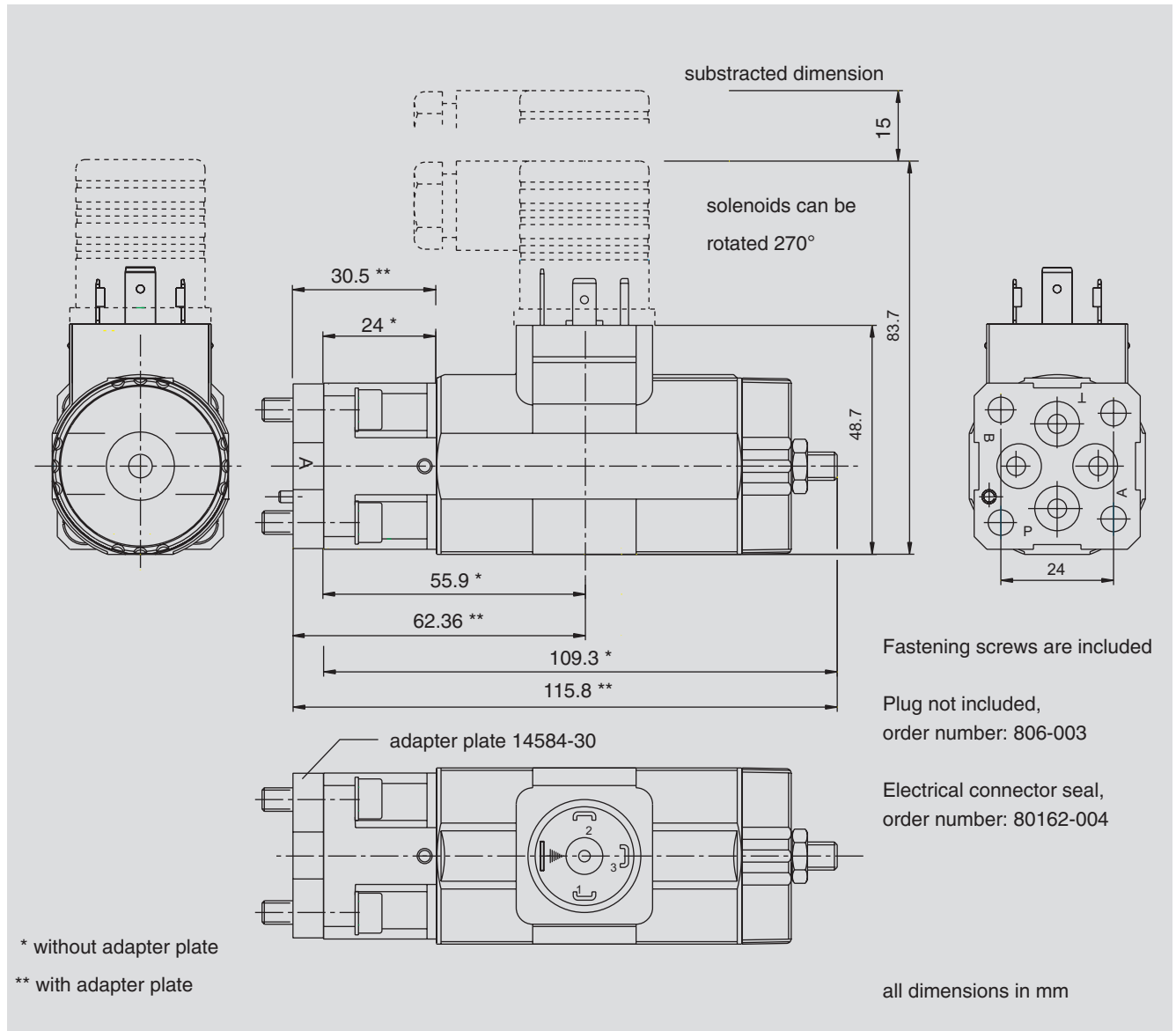
Specifications according to VDI 3267

General		
Design		piston valve
Mounting method		4x M5x15 (M5x20 with adapter plate)
Connection of ports		mounting plate
Mounting positions		mountable in any position
Ambient temperature	°C	0 to 50
Mass valve	kg	0,3
Protection system		IP 65
Hydraulic		
Operating pressure range		
Ports P, A, B	bar	200
Port T	bar	40
Hydraulic oil temperature	°C	20 to 80
Rate of flow	l/min	7 at $\Delta p = 70$ bar
Switching time on	ms	4 to pressure change
Switching time off	ms	4 to pressure change
Electric		
Double stroke magnet	Ω	2 x 3,7
Nominal current	A	2
Base frequency	Hz	500
Amplifier		PWM4
Drive	V	+/- 10; digital E/A Option: CAN Bus

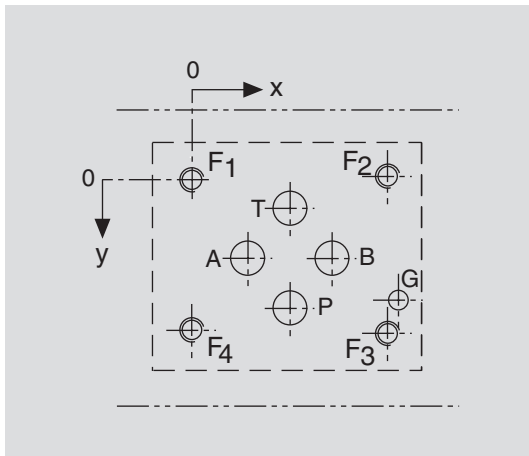
Options

- Alternative symbols
- Alternative pressure range
- Alternative connectors

Dimensioned drawing



Port connection pattern NG4 ISO 4401

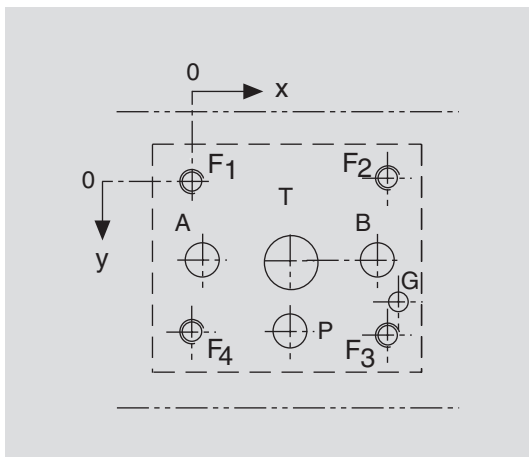


View: mounting plate side

	P	A	T	B	F1	F2	F3	F4	G
Ømax	Ø4,5	Ø4,5	Ø4,5	Ø4,5	M5	M5	M5	M5	Ø3,4
x	12	4,3	12	19,7	0	24	24	0	26,5
y	20,25	11,25	2,25	11,25	0	-0,75	23,25	22,5	17,75

F: min. 1,5 x Ø, deep
 G: min. 1,5 x Ø, deep
 all dimensions in mm

Port connection pattern NG4 (without adapter plate)

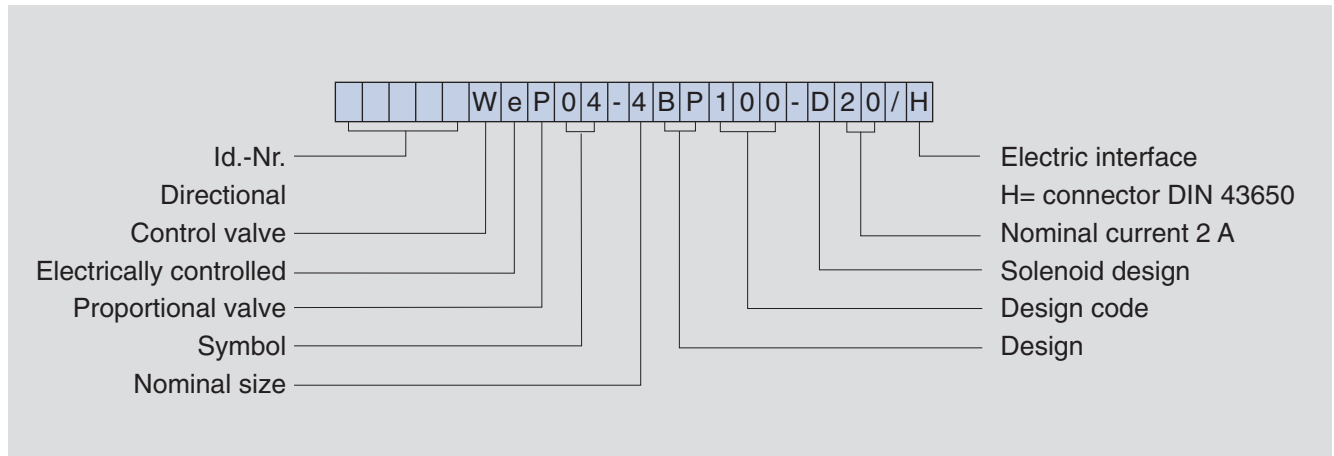


View: mounting plate side

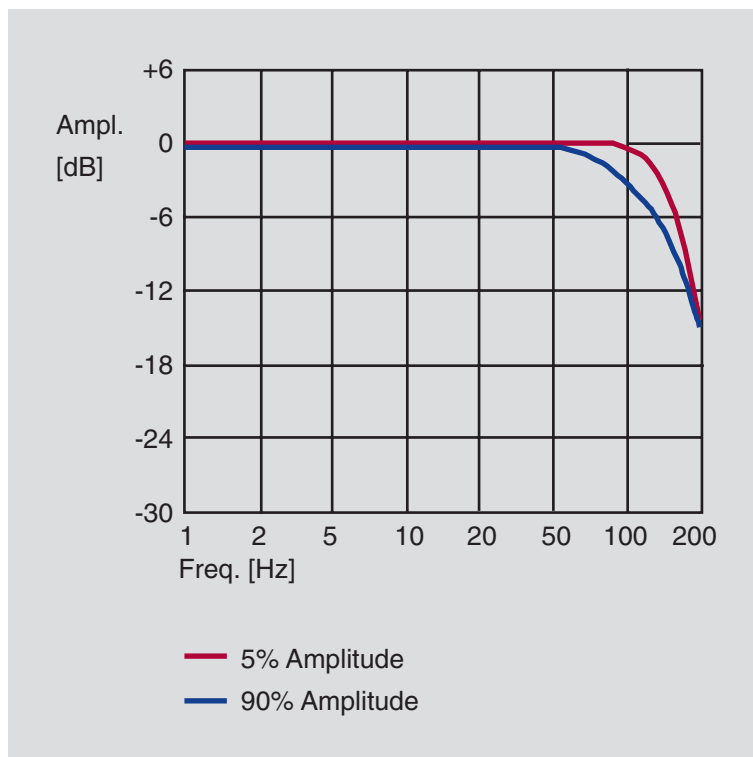
	P	A	T	B	F1	F2	F3	F4	G
Ømax	Ø4,5	Ø4,5	Ø8	Ø4,5	M5	M5	M5	M5	Ø3,4
x	12	1,02	12	23,02	0	24	24	0	26,5
y	22,5	11,25	11,25	11,25	0	-0,75	23,25	22,5	17,75

F: min. 1,5 x Ø, deep
 G: min. 1,5 x Ø, deep
 all dimensions in mm

Type code



Bode diagram



Voith Turbo H + L Hydraulic GmbH & Co. KG
Schuckertstraße 15
71277 Rutesheim, Germany
Tel. 0 71 52/9 92-3
Fax 0 71 52/9 92-4 00
sales-rut@voith.com
www.voithturbo.com

VOITH
Engineered reliability.