

Rapid-Traversal Feed Unit NG6 ISO 4401 with adjustable switching-time delay

Design and function:

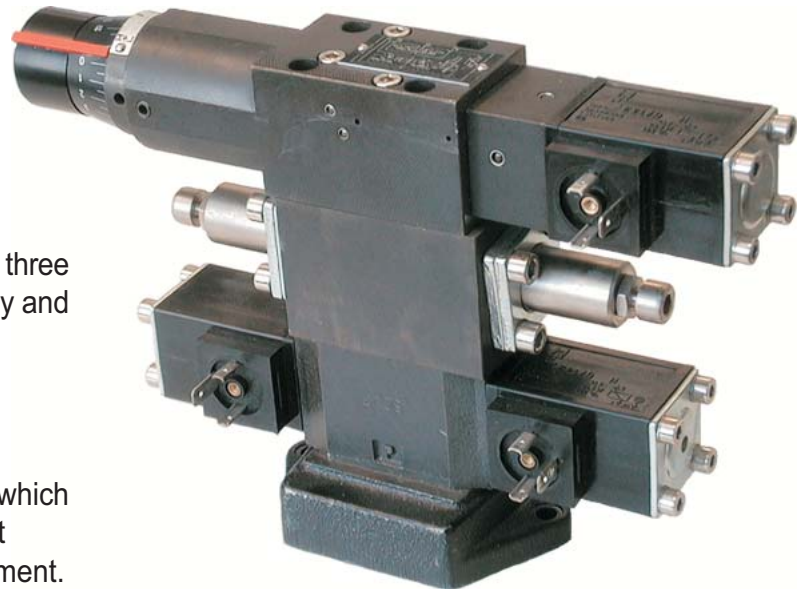
The H+L Rapid-Traversal Feed Unit consists of three valve components, which are stacked vertically and form a complete unit.

The following elements are used:

A solenoid-operated directional control valve which controls the cylinder or hydraulic motor, i.e. it determines the direction and stops the movement.

A rapid-traverse feed valve in the return line of the directional control valve, which controls the speed of the actuating component by throttling the return flow. A directional control valve (type NG4) is used to switch the rapid-traverse feed valve between quick motion and working feed.

A flow control valve, which controls degree of acceleration and deceleration.



Advantages:

- Straightforward operation, rugged valve technology simple connection pattern.
- Compact design
- Ramp can be adjusted manually and is repeated with high accuracy
- Standardised connection pattern according to ISO 4401

Areas of Application:

- Acceleration and deceleration of masses (rotary and linear)
- Positioning of movable masses (rotary and linear)

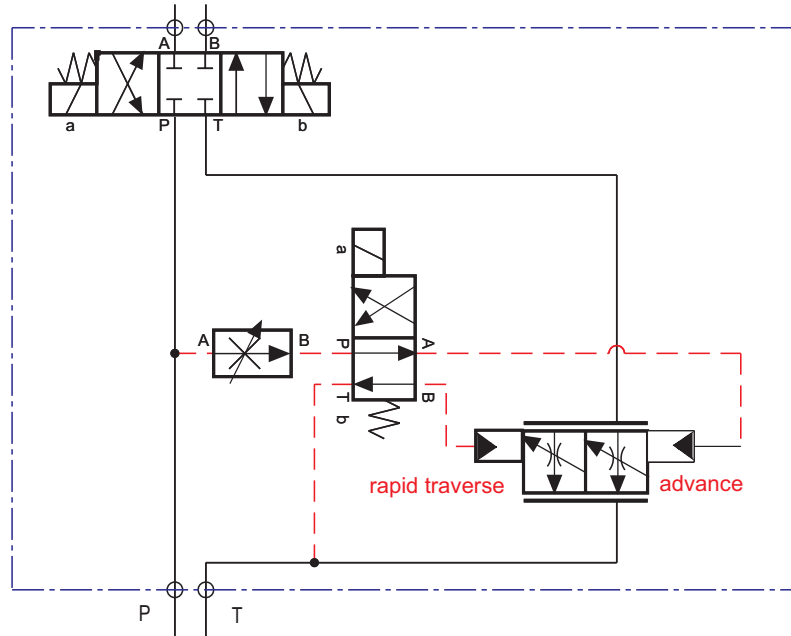
Example: Lifting-table drives, feed and transport drives, turret drives, swivelling unit drives etc.

The specifications given herein are subject to alteration

Rapid-Traversal Feed Unit NG6 ISO 4401

with adjustable switching-time delay

Hydraulic Circuit:



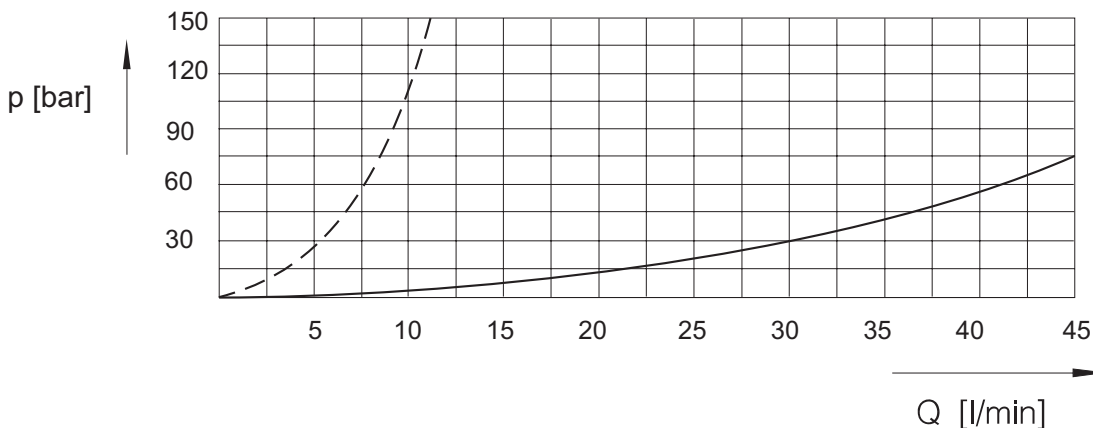
Specifications:

Mounting Position:	mountable in any position
Port connection pattern:	NG6 ISO 4401
Operating pressure:	150 bar
Flow rate of rapid movement:	$Q_{\max} = 45 \text{ l/min}$
Flow rate of traverse movement:	$Q_{\min} = 2 \text{ l/min}$
Hydraulic oil temperature:	0°C - 80°C
Switching delay:	20 ms (Option: 10 ms)
Power consumption:	25,5 W
Controlling voltage:	24V DC

Characteristic curve

for hydraulic oil 35 mm², 50°C

---: rapid movement min = traverse movement max
—: rapid movement max

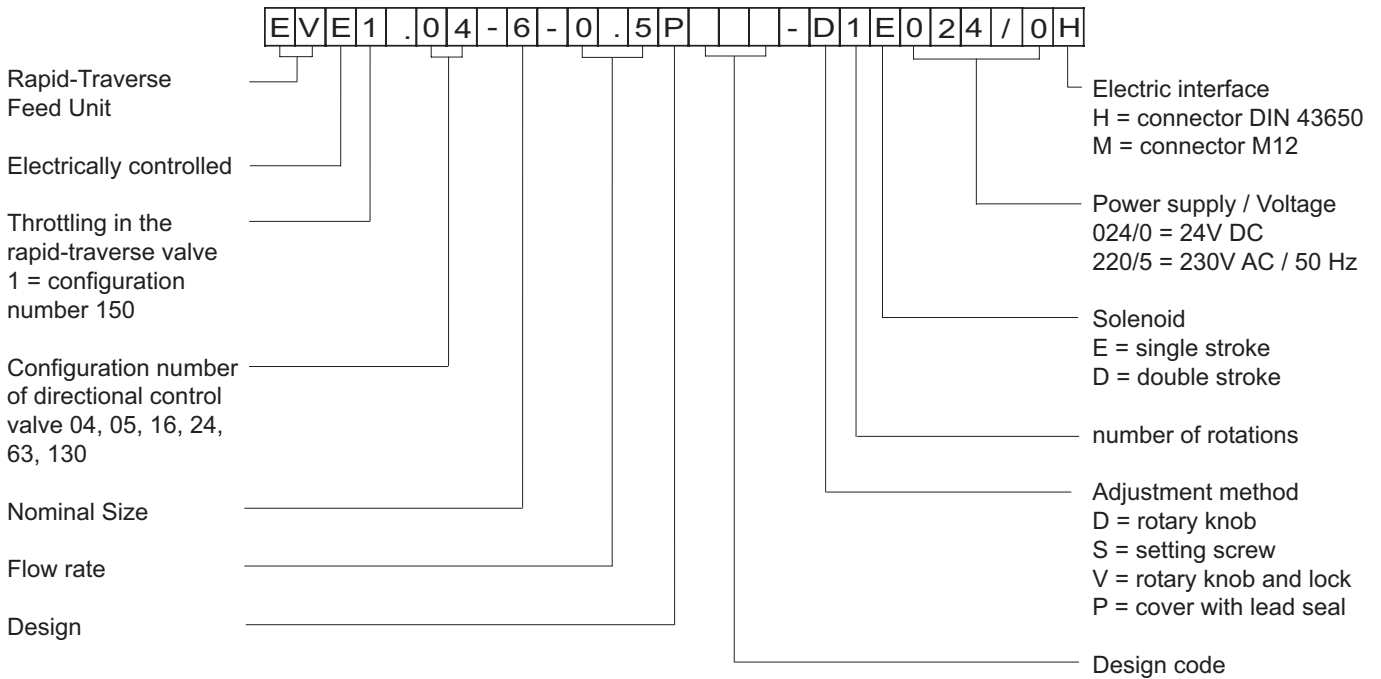


The specifications given herein are subject to alteration

Rapid-Traversal Feed Unit NG6 ISO 4401

with adjustable switching-time delay

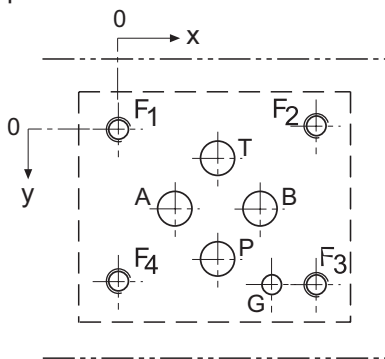
Type Code:



Port connection pattern

NG 6 ISO 4401

The figure shows the side of the mounting plate to which the valve is fastened



Single-unit mounting plate

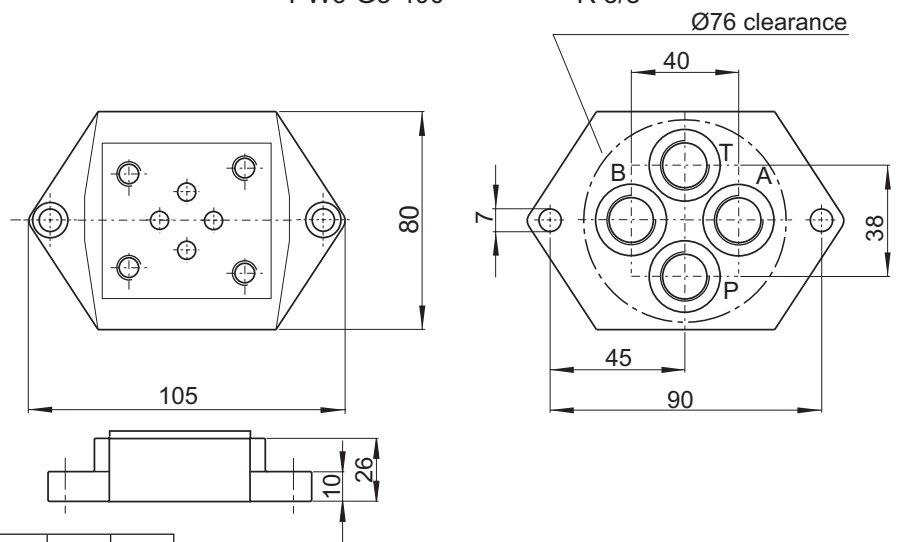
Order number:

PW6-G2-400

PW6-G3-400

R 1/4"

R 3/8"



	P	A	T	B	F1	F2	F3	F4	G
Ømax	Ø7,5	Ø7,5	Ø7,5	Ø7,5	M5	M5	M5	M5	Ø4
x	21,5	12,7	21,5	30,2	0	40,5	40,5	0	33
y	25,9	15,5	5,1	15,5	0	-0,75	31,75	31	31,75

F: min. 1,5 x Ø, deep

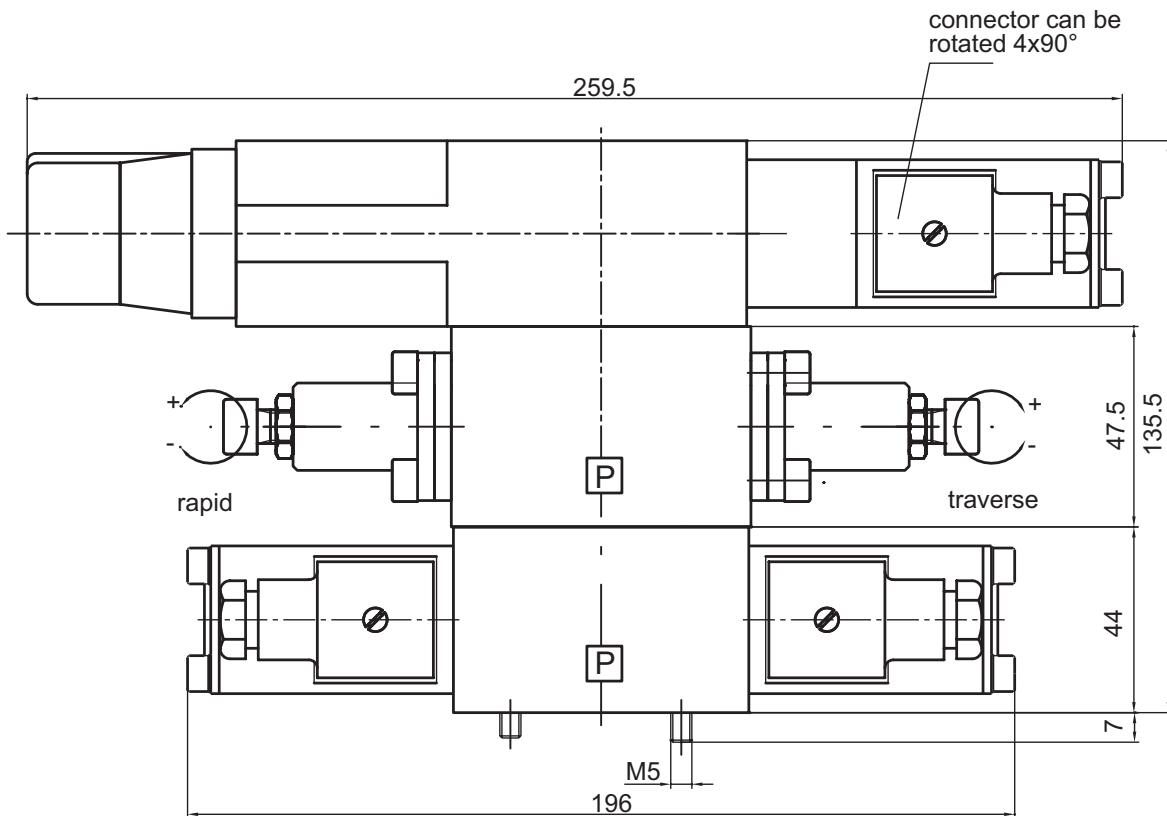
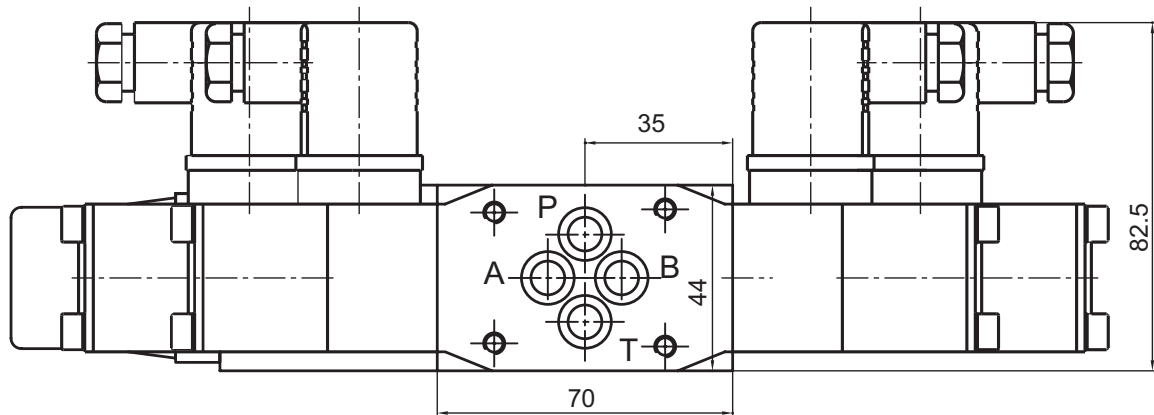
G: min. 1,5 x Ø, deep

Multiple-unit mounting plates can be supplied on request

The specifications given herein are subject to alteration

Rapid-Traversal Feed Unit NG6 ISO 4401 with adjustable switching-time delay

Dimension drawing:



The specifications given herein are subject to alteration