

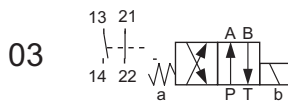
4/2 Way Valve NG 25 ISO 4401

electrical monitoring of the spool position,
piloted, pilot NG 4 ISO 4401



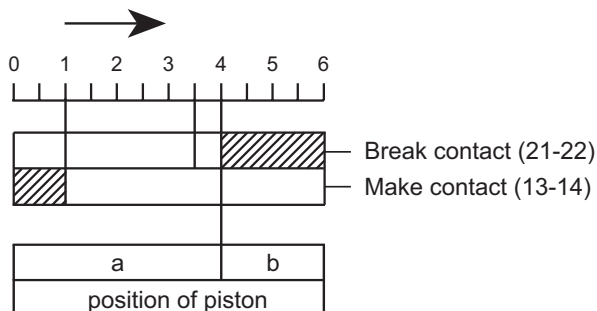
- Piloted piston valve with electrical monitoring of the spool position
- High switching capacity
- Short switching time
- Minimised flow resistance ensures power sawing operation
- Solenoids can be rotated (3x90°), allowing alternative connector positions
- Forced opening of monitor switch increases safety


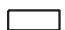
Symbol:



Switching ways:

Stroke of piston in mm



-  Contact closed
-  Contact opened

Specifications according to VDI 3267

General

Flow path	see diagramms
Type of valve	piston valve
Mounting method	4x M12x60 DIN912
Connection of port	mounting plate
Mounting positions	mountable in any position
Ambient temperature	°C -5 to +50
Mass valve	kg 11
Mass mounting plate	kg 7,5

Hydraulic

Operating pressure range		
Ports P, A, B	bar	280
Actuating pressure range	bar	min 15 max 120
Hydraulic oil temperature	°C	-10 to +70
Viscosity range	mm ² /s	10 to 300
Maximal rate of flow	l/min	450
Operation		hydraulically operated electrically controlled 24V DC 230V, 50Hz AC
Switching time on	ms	30
Switching time off	ms	30
Power consumption P20	W	30
Duty factor	%	100 100
Protection system DIN 40050		IP65 IP65

Options:

- Alternative configurations
- Alternative voltage
- Mechanical operation

The specifications given herein are subject to alteration

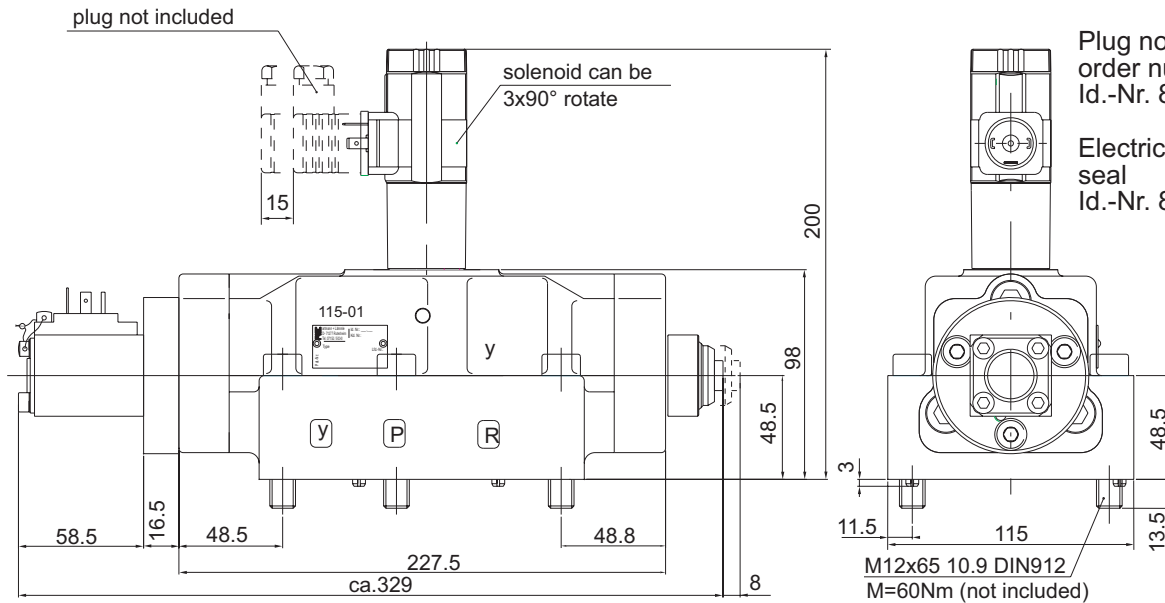
4/2 Way Valve NG 25 ISO 4401

electrical monitoring of the spool position,
piloted, pilot NG 4 ISO 4401

Fastening screws
order number:
4 x Id.-Nr. 800-100

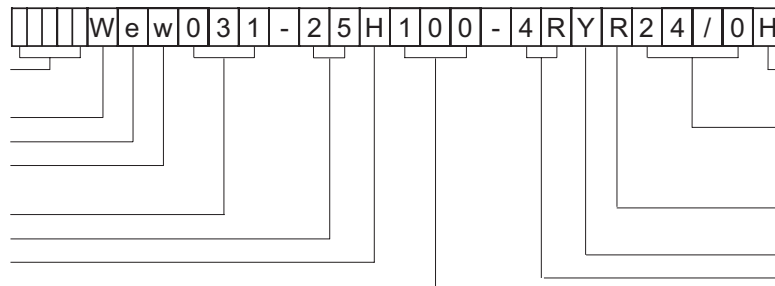
Plug not included,
order number:
Id.-Nr. 806-002

Electrical connector
seal
Id.-Nr. 80162-004



Type Code:

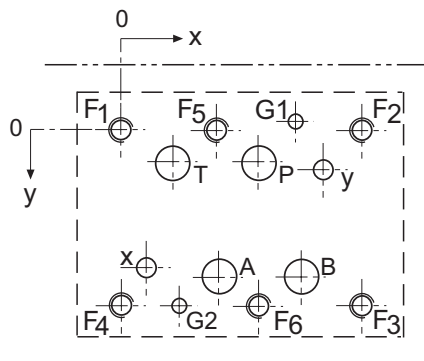
Id.-Nr.(specified by the factory)
Directional control valve
Electrically controlled
El. monitoring of the spool position
Configuration number
Nominal size
Mounting pilot
Design code



Port connection pattern

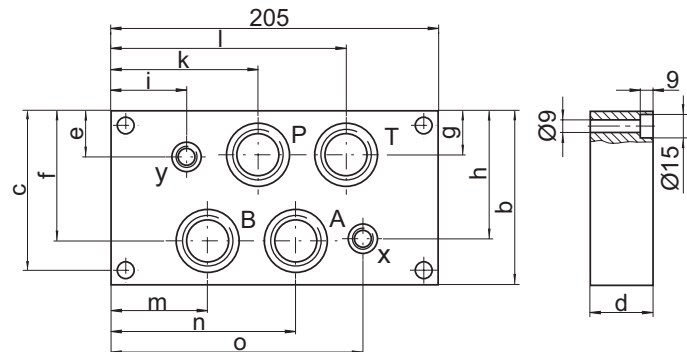
NG 25 ISO 4401

The figure shows the side of the mounting plate to which the valve is fastened



Single-unit mounting plate

Order number:
PW25-G6-400 R= 1"
PW25-G7-400 R=1¼"



	a	b	c	d	e	f	g	h	i	k	l	m	n	o
G6	11,5	115	95	40	30,5	86	29	84,5	45	90	145	59	114	159
G7	29	150	130	60	48	108	42	102	37	85	150	55	120	168

	P	A	T	B	X	Y	G1	G2	F1	F2	F3	F4	F5	F6
Ømax	25	25	25	25	11,2	11,2	7,5	7,5	M12	M12	M12	M12	M12	M12
x	77	53,2	29,4	100,8	17,5	112,7	94,5	29,4	0	130,2	130,2	0	53,2	77
y	17,5	74,6	17,5	74,6	73	19	-4,8	92,1	0	0	92,1	92,1	0	92,1

F: min. 1,5 x Ø, deep
G: min. 1,5 x Ø, deep

Multiple-unit mounting plates
can be supplied on request

The specifications given herein are subject to alteration