

Hydraulic Roll Lift

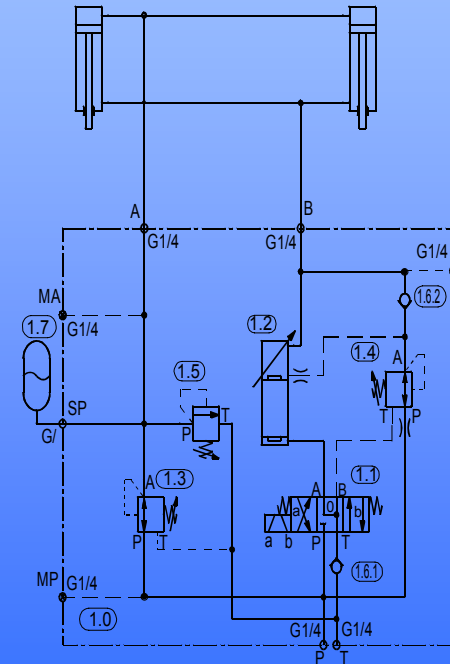


Features :

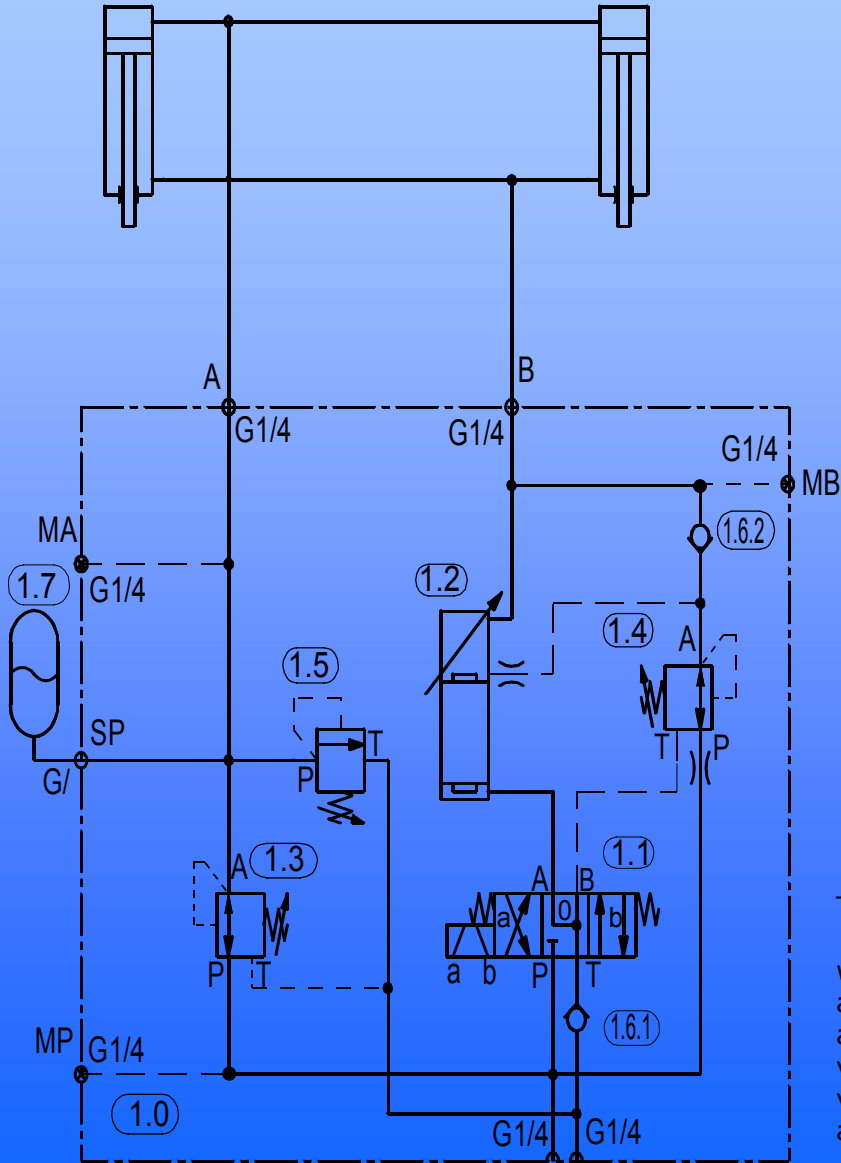
- adjustable lift stroke, without mechanical lift stop
- adjustable feed roll press force
- very short, reproducing switch- and cycle time
- service stroke at reduced speed
- closed function subassembly with compact design
- simple valve control with fast switching valves

Application:

- roll lift at feeding system



Hydraulic Roll Lift



- 1.0 roll lift control block
- 1.1 lift valve, rapid switching
- 1.2 proportioning valve, adjustable
- 1.3 pressure reducing valve, press force
- 1.4 filling in valve (5 - 15 bar)
- 1.5 pressure protection, accumulator
- 1.6 check valve
- 1.7 accumulator

valve circuit (1.1)

	a	0	b
takt lift			x
takt close		x	
service lift	x		
service close		x	

Technical Data:

working pressure p:*	max. 250 bar
arrangement lift cylinder:*	Optional cylinder extend -> close / lift random
amount lift cylinder:*	
valve voltage: 24 V	
valve switch time:	17 ms (Option 8 ms -HS2)
accumulator volume:*	0.5 l Standard

