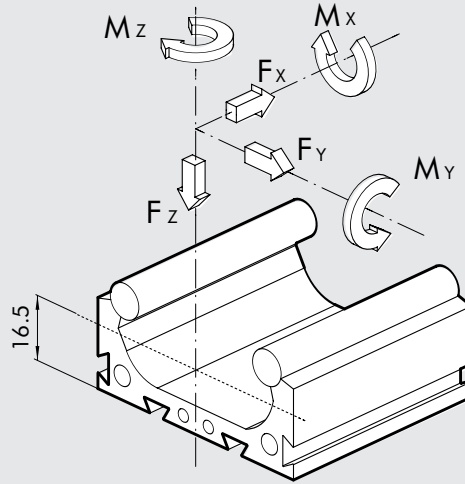


**MOMENTS**



Moment of inertia Jy	mm <sup>4</sup>	226.000
Moment of inertia Jz	mm <sup>4</sup>	2.800.000
Weight of version with ISO cylinder Ø 32	Kg	3 + 0.016 stroke/mm
Weight of version with rodless cylinder	Kg	5.1 + 0.010 stroke/mm
Deceleration energy	Joule	2÷10
<b>Admitted loads</b>		
Fy	N	± 1400
Fz	N	+ 2100; - 1000
Fx with ISO 6431 cylinder Ø 32	N	72 x pressure (bar)
Fx with rodless cylinder Ø 25	N	45 x pressure (bar)
Mx	Nm	55
My	Nm	100
Mz	Nm	100

**CALCULATION:**

With several simultaneous loads (compare each load with those admitted), it is possible to define the equivalent load.

$$F_{equiv} = \sqrt{\left[ F_y + \frac{2 M_z}{0.12} \right]^2 + \left[ F_y + 2 \frac{M_y}{0.12} + 2 \frac{M_x}{0.08} \right]^2}$$

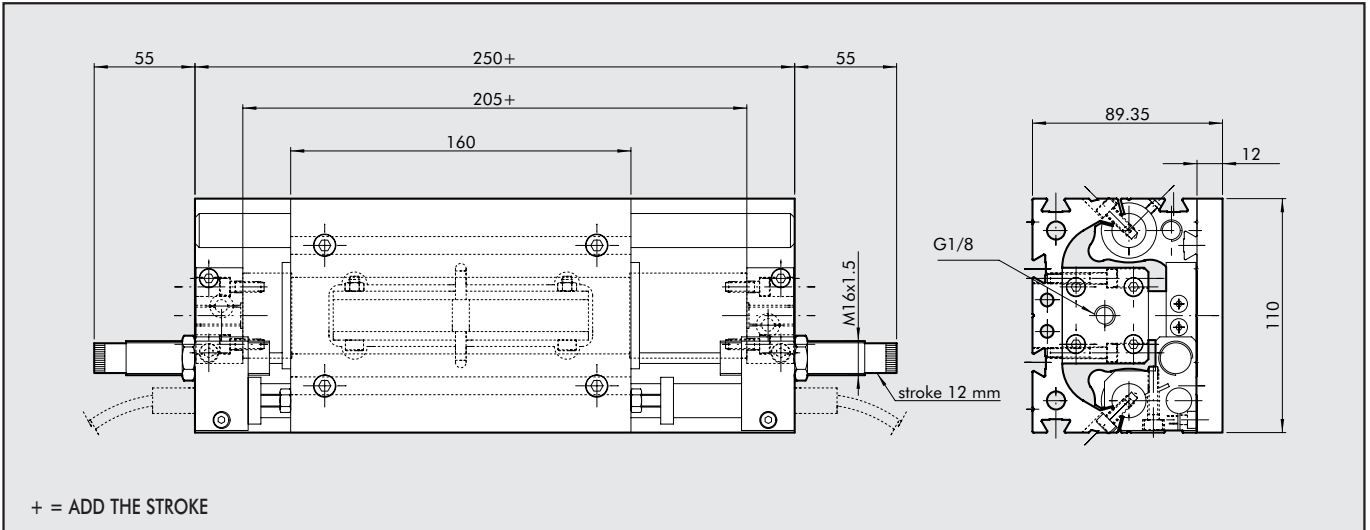
The equivalent load must be compared with the max. Fy load.

- The loads in the table are admitted as
- static loads
  - dynamic loads for 500 km duration.

As regards duration with other loads, use the following formula:

$$LIFE [Km] = 500 \cdot \left( \frac{F_{admitted}}{F_{actual}} \right)^3$$

**DIMENSIONS OF VERSION S7 WITH RODLESS CYLINDER, Ø 25**



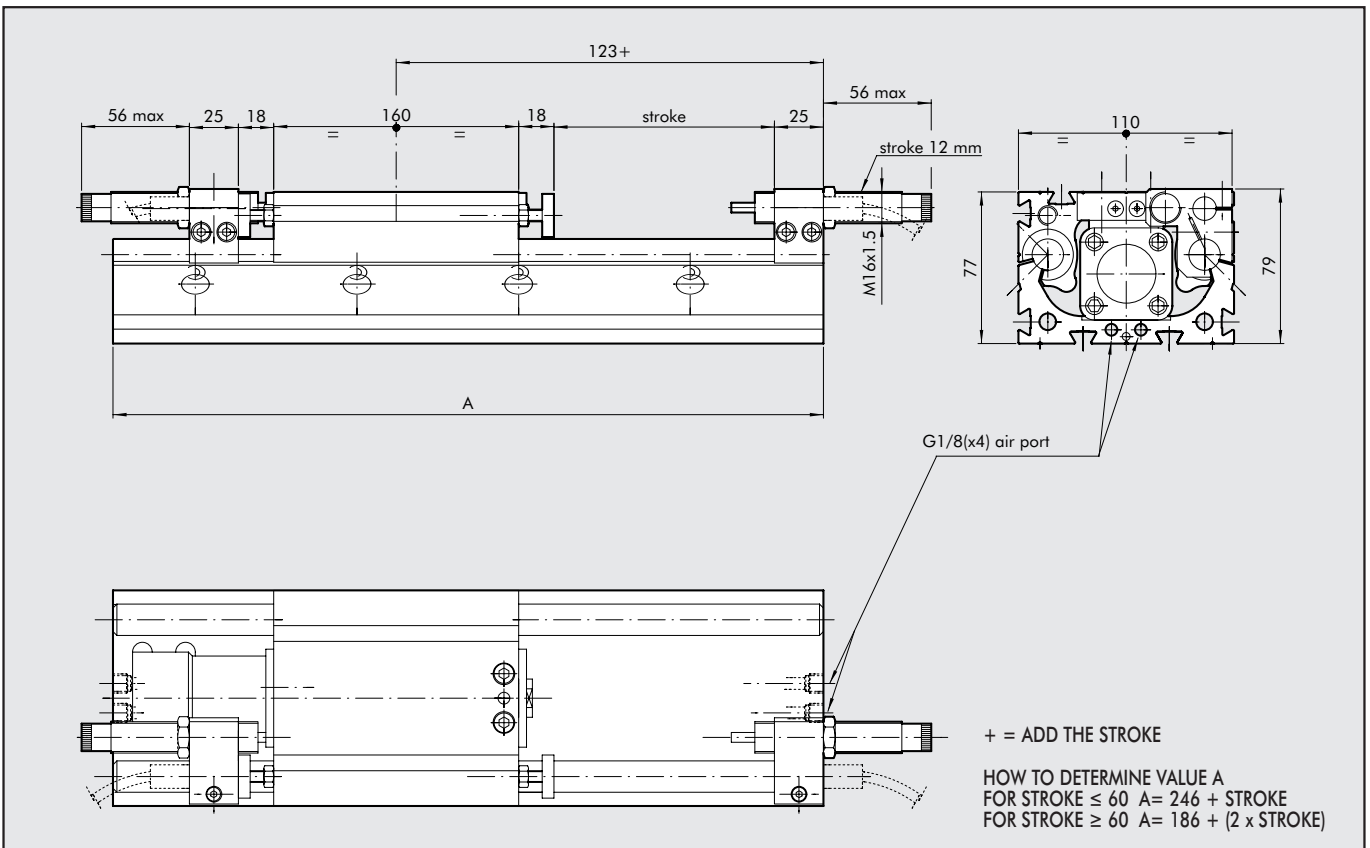
**ORDERING CODES**

Code

W149300....

N.B. Any additional work for fixing to a 12-mm plate must be done by the customer.

**DIMENSIONS OF VERSION S7 WITH ISO 6431 CYLINDER, Ø 32**

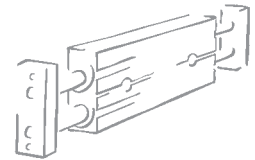


**ORDERING CODES**

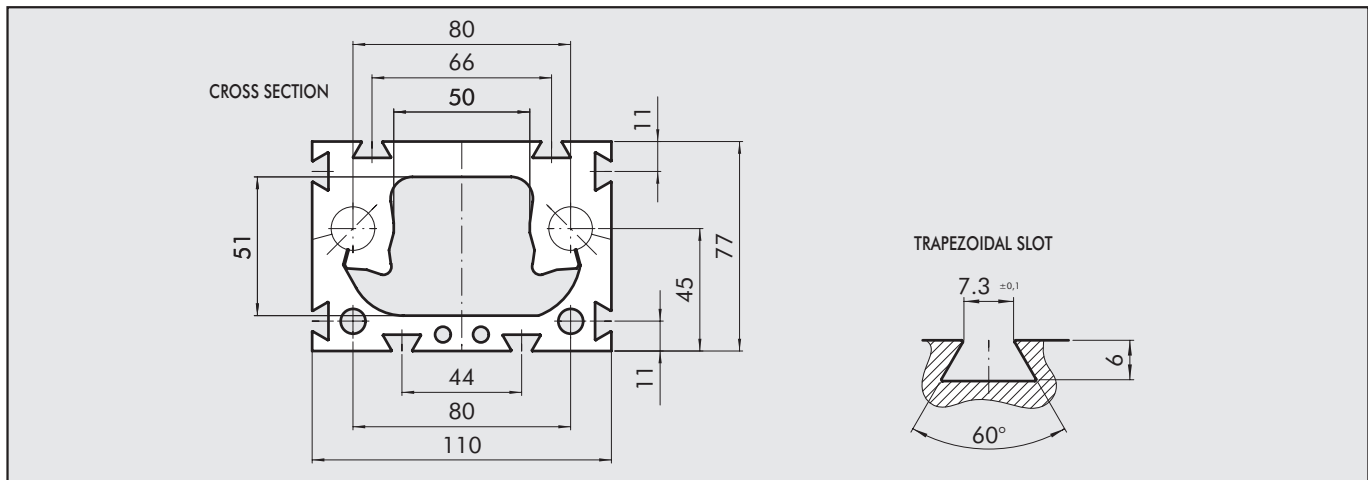
Code

W149400....

N.B. Any additional work for fixing to a 12-mm plate must be done by the customer.

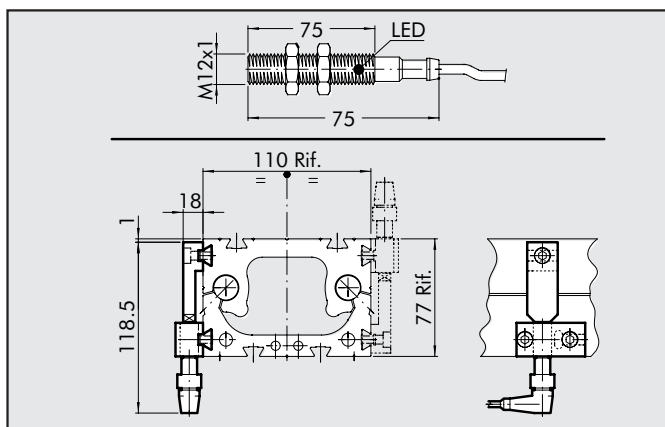


## CROSS SECTIONS AND ANCHOR POINTS



## ACCESSORIES

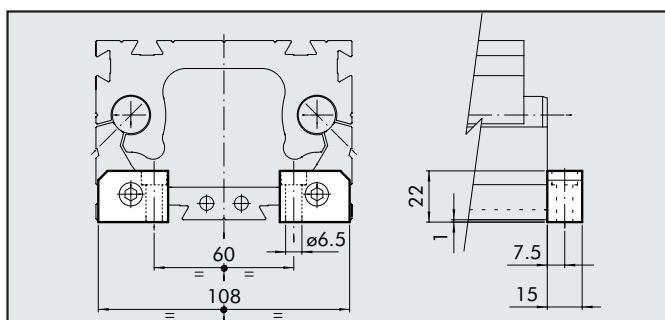
### INDUCTION SENSORS



### ORDERING CODES

Code	Description
W0950037395	INDUCTION SENSOR M12-PNP-NO-2 m
W0950009001	INTERMEDIATE SENSOR KIT FOR S7

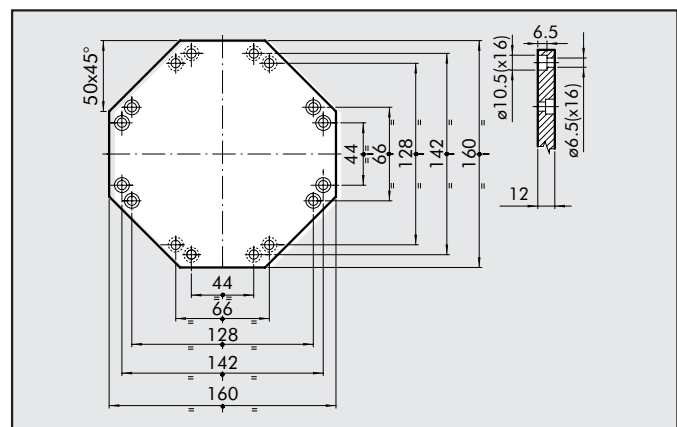
### FOOT



### ORDERING CODES

Code	Description
W0950009003	FEET KIT FOR S7

### INTERFACE PLATE



### ORDERING CODES

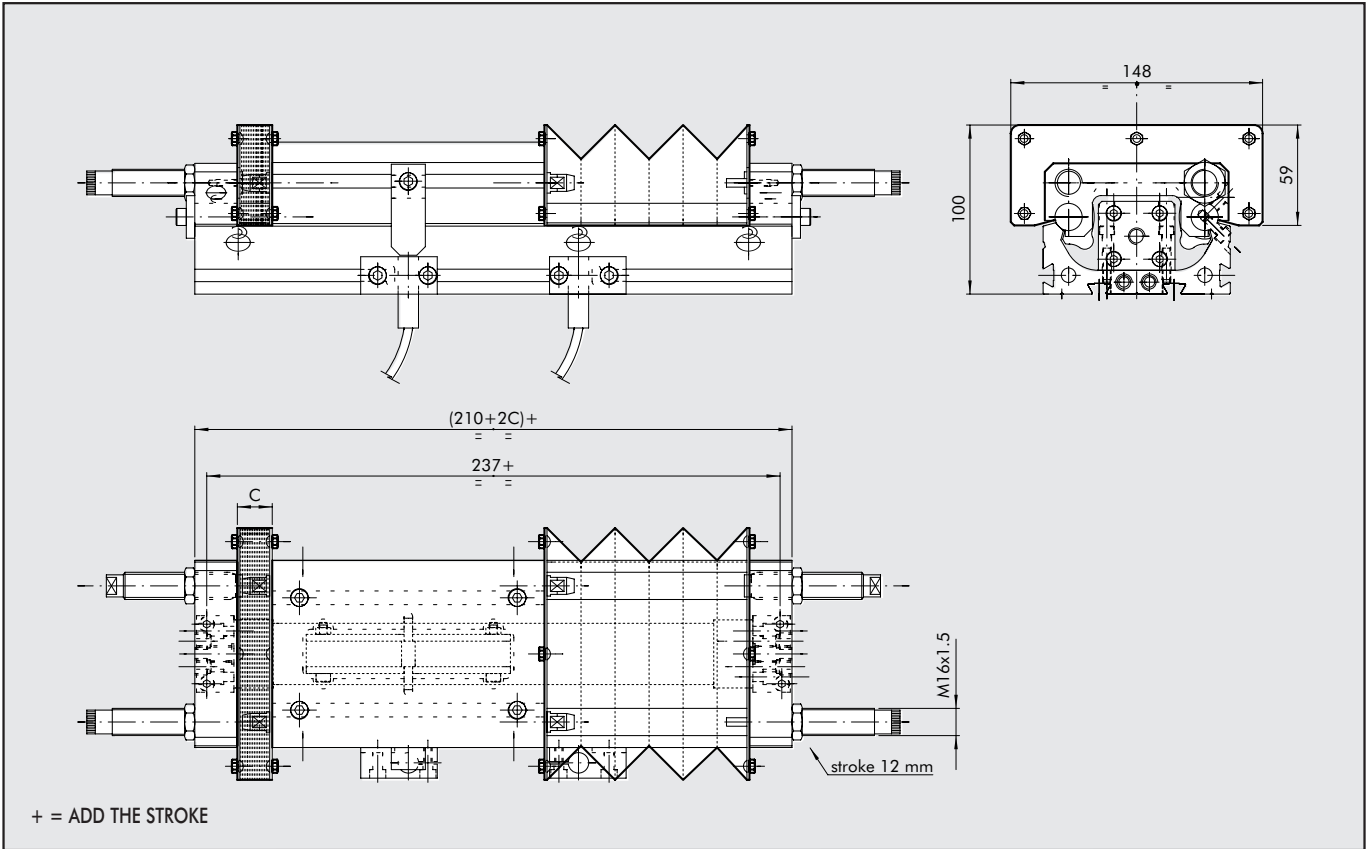
Code	Description
W0950009002	CROSS PLATE FOR S7

With the cross plate it is possible to connect two S7 heavy guides in the following ways:

- bottom side of one guide (centre distance 44) with the carriage of the another (centre distance 66)
- bottom side of one guide (centre distance 44) with the bottom side of the other (centre distance 44)
- carriage of one guide (centre distance 66) with the carriage of the other (centre distance 66).

Note: packed complete with 2 pieces and 2 screws

**DIMENSIONS OF VERSION S7 WITH PROTECTION BELLOWS**



**ORDERING CODES**

Code	Description
W149301....	VERSION S7 WITH RODLESS CYLINDER AND POLYURETHANE PROTECTION BELLOWS

**HOW TO CALCULATE VALUE C**

- For polyurethane  $0.0825 \times \text{stroke} + 8$

If  $C < 20.5$ , then  $C=20.5$

N.B. Any additional work for fixing to a 12-mm plate on the slide must be done by the customer.

**NOTES**