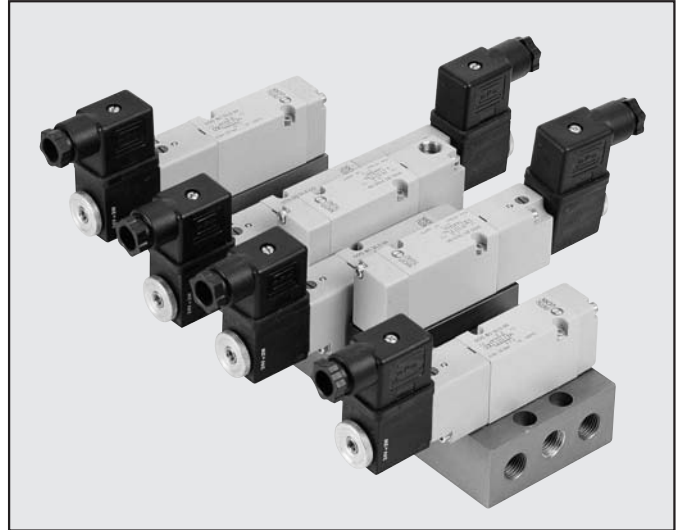


VALVES SERIES 70, ON BASE

The series 70 valves on base, available in the air- and solenoid-actuated versions, is an excellent clean solution for use when it is necessary to intervene on the valves without disconnecting the pipes. Here, the inlet, output and utility ports are in the base.

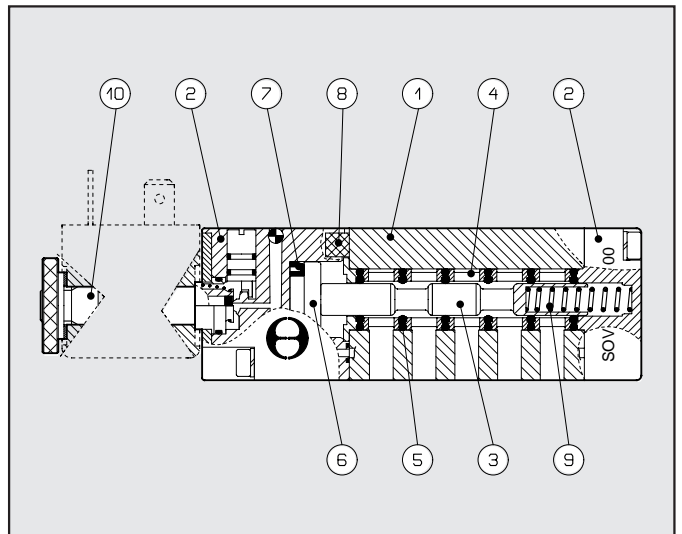
TECHNICAL DATA

Operating pressure:	• monostable	2.5 ÷ 10 bar
	• bistable	1 ÷ 10 bar
	• pilot-assisted	vacuum ÷ 10 bar
Minimum pilot pressure		2.5 bar
Operating temperature range		-10° ÷ +60°C
Nominal diameter		5 mm
Conductance C		107.69 NI/min · bar
Critical ratio b		0.29 bar/bar
Flow rate at 6 Bar ΔP 0.5 Bar		320 NI/min
Flow rate at 6 Bar ΔP 1 Bar		450 NI/min
Maximum torque coil nut		1 Nm

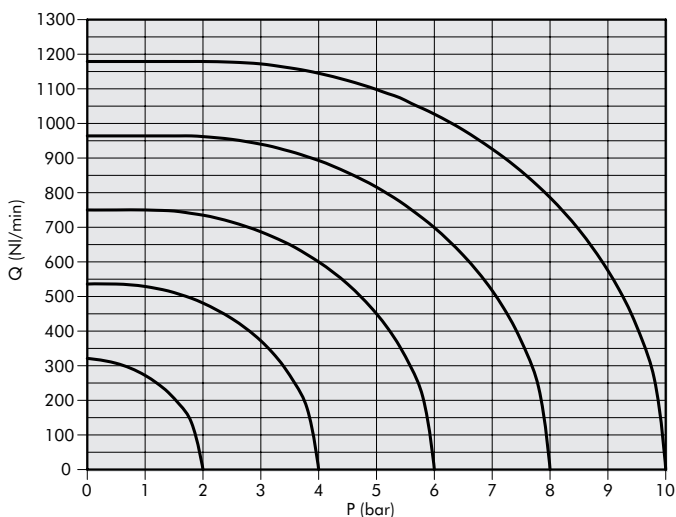


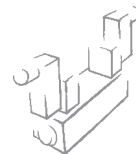
COMPONENTS

- ① VALVE BODY: Aluminium
- ② CONTROL/BASE: HOSTAFORM®
- ③ SPOOL: chemically nickel-plated aluminium
- ④ DISTANCE PLATES: plastic
- ⑤ GASKETS: Nitrile rubber NBR
- ⑥ PISTONS: HOSTAFORM®
- ⑦ PISTON GASKET: Nitrile rubber NBR
- ⑧ FILTER: sintered Bronze
- ⑨ SPRINGS: special steel
- ⑩ OPERATOR: Brass pipe – Stainless steel core

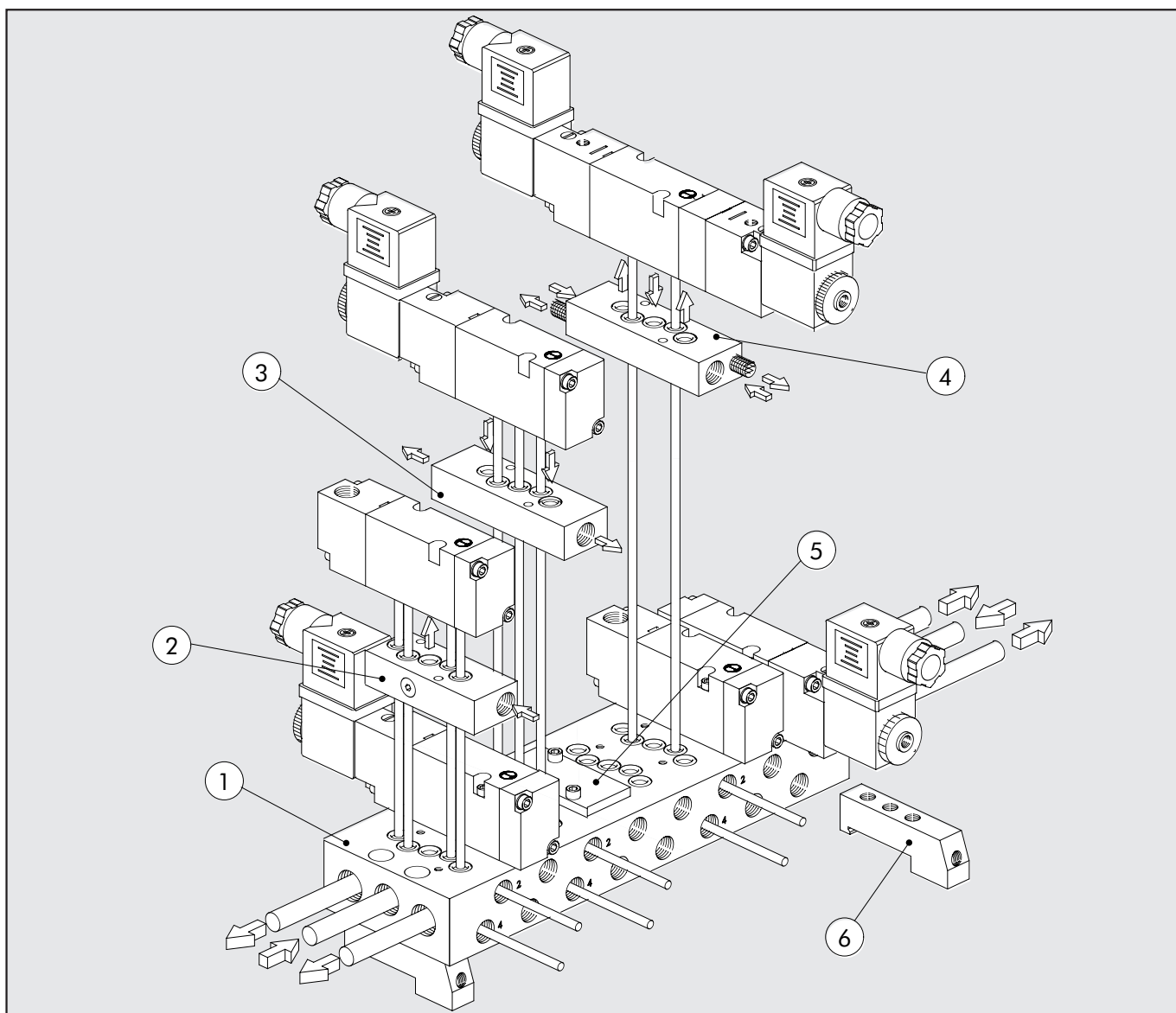


FLOW CHART





MULTI-PURPOSE BASE FOR VALVES SERIES 70 ON BASE



2

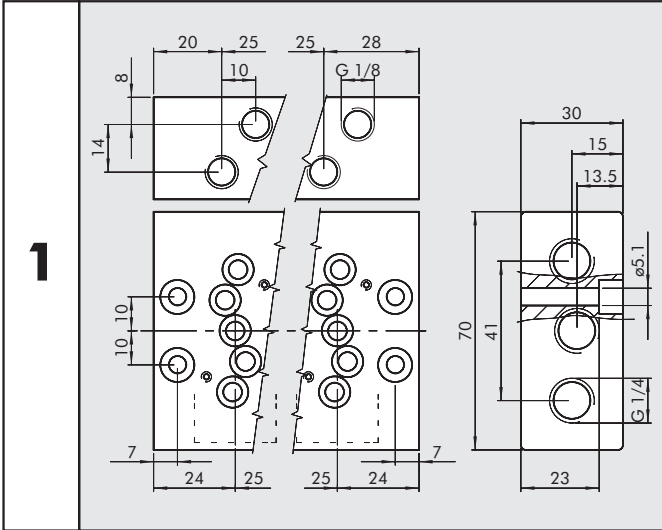
Abbrev.	Description	Abbrev.
①	2-position base 1/8 on base	0223100201
	4-position base 1/8 on base	0223100401
	6-position base 1/8 on base	0223100601
	8-position base 1/8 on base	0223100801
	10-position base 1/8 on base	0223101001
②	Separate feed kit	0223106301
③	Exhaust regulation kit	0223106303
④	Exhaust feed kit	0223106302
⑤	Blanking plate	0223106500
⑥	Ω bar adaptor	0226004600

KEY TO CODES

P	N	V	B	5	P	N	S	O	O			
FAMILY			PORT	FUNCTION		OPERATORS 14		RESETTING 12		FURTHER DETAILS		
PNV			B	1/8" on base	5	5/2	PN	pneumatic	S	mechanical spring	OO	5/2
SOV					6	5/3	SO	Solenoid valve	B	bistable	CC	closed centres
							SE	Solenoid pilot-assisted valve	D	differential	OC	open centres
											PC	pressure centres

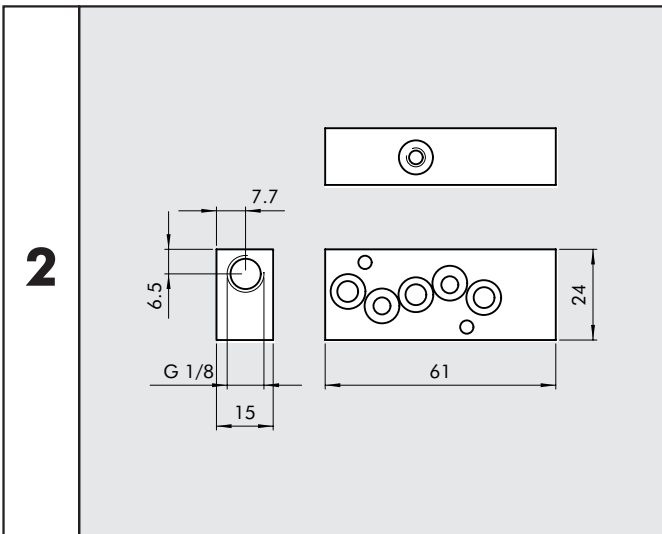
ACCESSORIES: MULTIPLE BASES FOR VALVES SERIES 70, ON BASE

MULTIPLE BASE



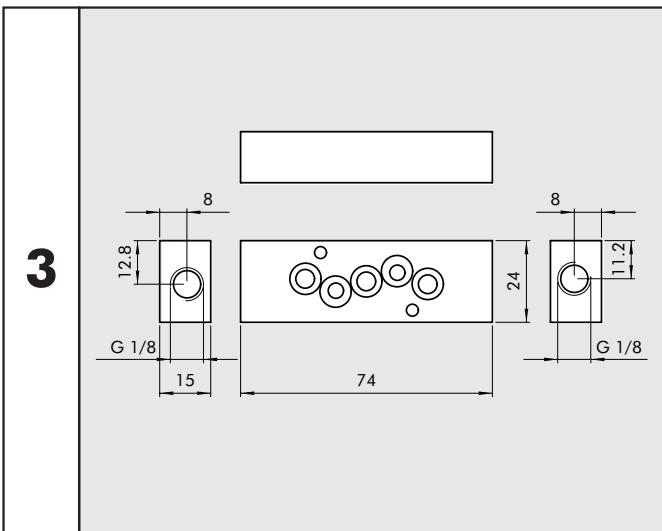
Code	Description	Weight [g]
0223100201	2-POSITION BASE 1/8 ON BASE	341
0223100401	4-POSITION BASE 1/8 ON BASE	591
0223100601	6-POSITION BASE 1/8 ON BASE	855
0223100801	8-POSITION BASE 1/8 ON BASE	1093
0223101001	10-POSITION BASE 1/8 ON BASE	1352

SEPARATE FEED KIT



Code	Description	Weight [g]
0223106301	SEPARATE FEED KIT 1/8	65

EXHAUST REGULATION KIT



Code	Description	Weight [g]
0223106303	EXHAUST REGULATION KIT 1/8	75

