

EPC Programmer and Monitor PC Interface for Windows™ 95/98/Me/NT4.0/2000

The EPC Programmer and Monitor Software Interface provides an interactive programming and debugging tool for the Oilgear Automation Systems EPC module (refer to Oilgear Sell Sheet 36260).

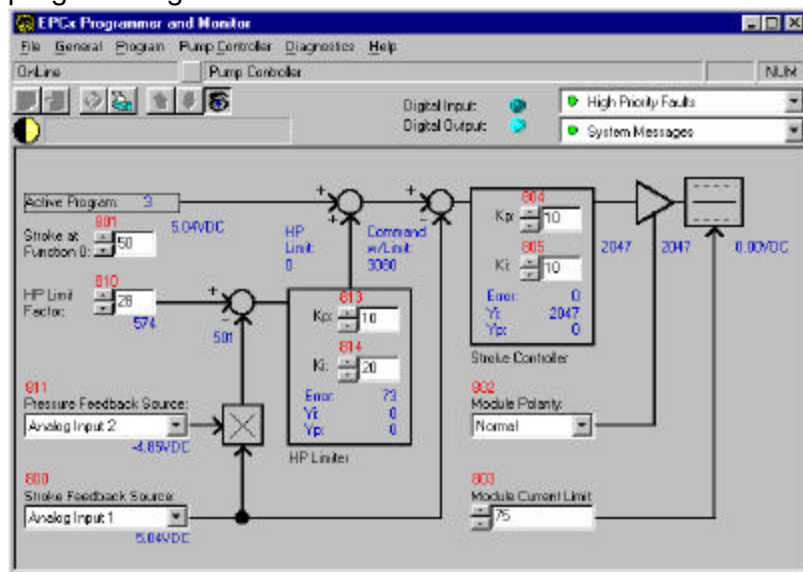
The PC interface software connects to the EPC module through a standard serial port and provides full programming access to the EPC.



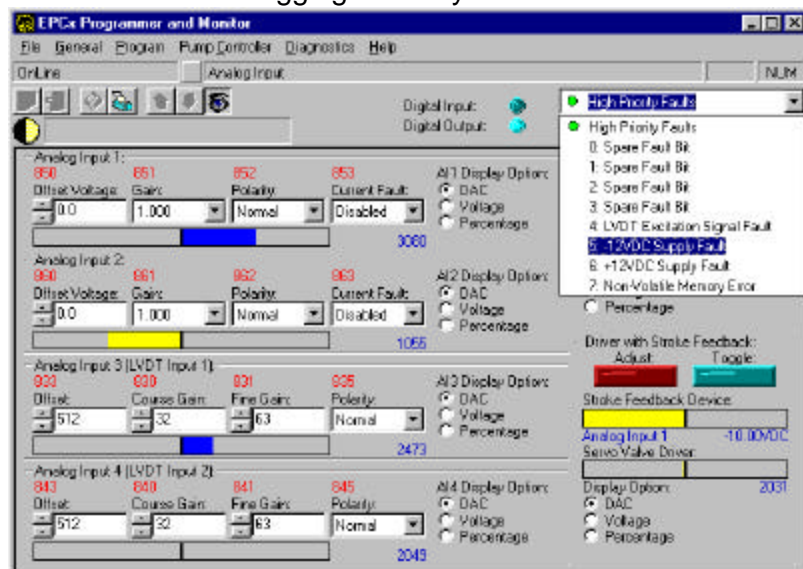
The PC interface is an ideal companion to the design professional or machine technician, displaying easy-to-understand graphic representations of the control programs and on-line updates of control information.

Features:

- Program and Monitor Utility for EPC1 and EPC2 modules
- Compatible with Microsoft Windows™ 95/98/Me/NT 4.0/2000
- Connects to a standard PC serial port through serial interface cable
- Provides archiving, retrieval, and printing of user programs
- Special Pricing for OEM applications available



Extensive diagnostic screens are provided to enable quick and conclusive debugging of the system.



Microsoft Windows and Microsoft Windows NT are registered trademarks of Microsoft Corporation.